

# The AMERICAN REVENUER



**"Dedicated to the Service of all Revenue Stamp Enthusiasts"**

**Member: National Federation of Stamp Clubs**

**Branch: Society Philatelic Americans #248**

---

Vol. 19, No. 7, Whole Number 177

September 1965

---

## **ASSOCIATION ATTORNEY RESIGNS REPLACEMENT NEEDED**

Mr. Adolph Koepfel, who has been acting as the Attorney for the American Revenue Association for some time has found it necessary to resign, due to the press of business. He is our immediate Past President and in addition has served as Vice President and an Eastern Director. He has done a great deal for our Association and all the members will wish to thank him for his many services. It is hoped that he may be able to find time to continue with his numerous contributions to revenue literature in the form of articles in The American Revenuer.

With Mr. Koepfel's departure, it is necessary that we find a replacement. Our new set of By-laws is partially finished and we require some legal talent to complete this important work. If there is a member who will volunteer to undertake this task, it is requested that he get in touch with the President.

---

## **DUES ARE DUE!**

The dues envelope enclosed with this issue of The American Revenuer will enable you to send your remittance along to the Secretary-Treas-

urer. If you will take care of this promptly you will serve both the Association and yourself. You will help the Association by eliminating the expense of a follow-up notice, this also helps you as all money spent in this way is not available for other services to the members. Further, you will help yourself, by getting your name into the next issue of the ARA roster which will appear early next year. Only paid up members will be included in the roster.

As mentioned in the president's column elsewhere in this issue, you are asked to indicate your opinions on the advisability of the operation of a Sales department by the A. R. A. Also whether you will support it as a buyer, seller or both.

Again may we encourage you to give serious thought to becoming a Contributing Member if you are not one already and if you are, to continue your support of the Association by remaining one.

---

## **LIBRARY ADDITION**

Through the courtesy of Howard B. Beaumont, A.R.A. #247, the library has received an additional copy of the 1962 booklet by Carl W. Georgi entitled The United States First Issue Revenue Stamps (1862-1871).

# THE AMERICAN REVENUER

Official Organ of the  
AMERICAN REVENUE ASSOCIATION

Published monthly (except July and August)

Subscription \$3.00 per year

Copy 50c

Second Class Postage Paid at Lawrence, Kansas

Editor & Librarian—Honer E. Webb, R. D. #1, Lewisburg, Pa. 17837

Advertising Manager—John S. Bobo, 1668 Sycamore St., Des Plaines, Ill.

Office of Publication—821 Vermont St., Lawrence, Kansas.

## Advertising Rates

Column inch, \$1.50 — ¼ page (3½ inches), \$5.00 — ½ page, \$9.00 — Page, \$15

## Contract Rates

Column inch, \$1.25—¼ page, \$4.40—½ page, \$8.00—Full page, \$13.50

These rates are for a minimum of five insertions and payable in advance at the full total cost.

Send all ad copy with check to Advertising Manager

John S. Bobo, 1668 Sycamore Street, Des Plaines, Ill.

Advertising Forms Close 10th of Month  
Preceding Date of Issue

Editorial Forms Close 1st of Month  
Preceding Date of Issue

## American Revenue Association Board of Directors

Robert M. Leard, President

Dr. Samuel B. Frank, Vice President

Frank Q. Newton, Jr., Secretary-Treas.

George T. Turner, Eastern Rep.

Dr. Hugh P. Shellabear, Eastern Rep.

Roy Hansen, Central Rep.

I. Irving Silverman, Central Rep.

Sherwood Springer, Western Rep.

D. James Giokaris, Western Rep.

Secretary: Frank Q. Newton, Jr., 6730 N. Temple City Blvd., Arcadia, Cal. 91007

Vol. 19, No. 7, Whole Number 177

September 1965

## PRESIDENT'S COLUMN

In this column in the June 1965 issue the subject of whether or not this Association should have a Sales Department was discussed and a request made for volunteers to act as Sales Manager. It was most gratifying to receive notes from two of our members offering their services in setting up and operating this service. However no comment on the use or desirability of such an operation was received from potential users. In order to get a better idea of the potential usage, space has been provided on the enclosed Dues Notice for statements by members on this subject, in order to secure some measure of the scope of interest and potential volume of business. Please let your Officers know what your desires are by filling out the information.

The Annual Dues Notice is enclosed with this issue. Through frugal management it has been possible to keep the dues at the same rate in spite of advancing costs, of which I am sure we are all fully aware. You can help by paying your dues promptly and keep operating costs to a minimum by avoiding the necessary follow-up notices the Secretary-Treasurer must mail to delinquent members. Thanks are extended to our long list of Contributing Members who are a big help in keeping this organization operating in the black and to the strenuous efforts of our Secretary-Treasurer in keeping the list of Members dropped for non-payment of dues to the lowest it has been for many years.

There have been some complaints that we do not print enough material on foreign revenues. We will be happy to do so if the members will submit articles on this wide and interesting field.

## ELLIOTT PERRY ELECTED TO HONORARY LIFE MEMBERSHIP

It is with great pleasure that the Board of Directors of the American Revenue Association announces that Honorary Life Membership in the Association has been conferred upon Mr. Elliott Perry of Westfield, New Jersey. Thus Mr. Perry joins the ranks of the deans of fiscal philately, only five such awards having been made previously to Messrs. Deats, Cabot, Vanderhoof, Chappell and Applegate. This class of membership was founded in 1956 to properly recognize those who have made major contributions to our hobby and to the Association.

Mr. Perry's interest in revenue stamps began before 1900 when he acquired copies of two Match stamps. As a boy he found a copy of a 60c Orange, First Issue, Imperforate, in the attic of the Perryville Woolen Mill in Massachusetts cancelled with his great grandfather's signature. Some of these boyhood finds still rest in his collection. He came to New York in 1912 and married the next year, 1913, the year of the first International Stamp Exhibition. Mr. Perry had an exhibit of Match and Medicine stamps in that early exhibit which received an Honorable Mention.

About this time he began to write extensively in the philatelic press and his writings have appeared for the past fifty years. His articles on our 19th Century Revenues in Mekeel's, written under the pen name of Christopher West, and his own Pat Paragraphs are particularly well known and are in constant use by today's philatelists as references. His dealings in revenue stamps have placed many prized items in the hands of modern philatelists and his writings have given all philatelists much knowledge and pleasure.

His active interest continues and his research and writings are eagerly anticipated by students of revenue stamps. It is with sincere best wishes that this honor is extended by the American Revenue Association.

## BIDWELL AUTHORS WINE BOOKLET

The results of a fifteen-year study have been published by Ray W. Bidwell, A.R.A. #708, under the title, "Series of 1941" Wine Revenue Stamps of the United States of America.

The subject is covered quite extensively from the printing methods to the tax rates during the period of usage to various varieties to the quantities issued with many intermediate stops.

This booklet should be in the hands of all U. S. revenue collectors as well as collectors of U. S. stamps in general. It is well printed, liberally illustrated and a pleasure to read. It should be useful to the beginner as well as the advanced collector.

The revenue collecting fraternity can be justly proud of this latest contribution to the literature of revenues. Such works in the hands of serious collectors must increase the number of those who will add the revenue field to their interests.

The booklet sells for \$3.00 and is available from the author at Long Hill Road, Andover, Conn. 06232.

---

## FURTHER ON USPC CANCEL

Frank Q. Newton, Jr., ARA #856

As a sequel to the writer's brief speculative article in the December 1963 issue of The American Revenuer concerning a cancel on an R228 Type I, a Type II has been found dated Nov. 27, 1918.

As was the case on the previously illustrated copy, the excellent cancel registration indicates very careful application such as would be easily performed by a firm in the printing business. The process of application has yet to be determined.

This new information would lead to the opinion that these were parcel postally used on shipments under the War Revenue Act of 1917. Should this prove to be the true usage, copies could have dates up to 1922.

## STATE NOTES

Charles H. Hermann, ARA #5

### Kentucky

A new inspection stamp has appeared. "TOBACCO / SEED LABEL / KENTUCKY / AGRICULTURAL EXPERIMENT STATION / Signed William A. Seay / Director" in six lines enclosed in 24x19 mm frame. No face value, black on yellow, rouletted 6½ vertically.

### New York

There are a lot of very nice double transfers found on the early issues of New York Stock Transfer Tax stamps. Three are described and shown.



\$1.00 1905 Ultramarine, roul. 11.

Note top corners and vertical lines at sides. At right, they fill the white space inside the vertical lines.

### ARGENTINE REVENUES

Beautiful two volume collection, 3650 stamps cat by Forbin 6530 Fr., price \$365.

E. E. HARRISON

416 73rd Ave. No. 178

St. Petersburg, Florida 33702



\$2.00 1905 Carmine, roul. 11.

This shows much doubling, especially in letters around seal and in "Dollars."



\$2.00 1906 Carmine, perf. 12.

A major double transfer showing all over, note fine vertical line inside vertical line at right, line through pearls and line above pearls at top.



#### Tennessee

Tobacco Tax stamps of this type have been used since 1933 along with another type with outline numerals since 1941.

There have been many color changes and new values over the years.

Hardest to get seem to be the  $\frac{3}{4}$ c violet issued imperf, also perf.  $12\frac{1}{2}$  and the  $2\frac{3}{4}$ c magenta (perf.  $12\frac{1}{2}$ ). The 9c seems to come along oftener since the new tax rate went in.

Shown is a fine double print of the 10c olive.

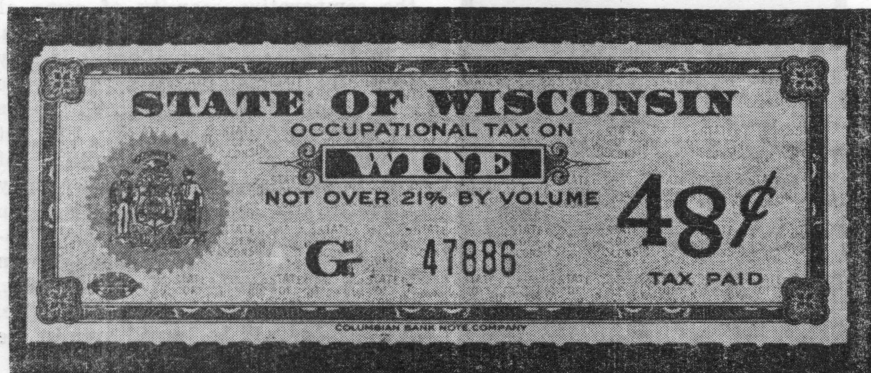
#### Wisconsin

The case wine stamps with value in gallons for over 21% alcohol, formerly carmine on white are now carmine on yellow paper.

One wonders how an error like the one illustrated could escape notice so long, but it was used 15 years before I saw it and the serial number shows nearly 50,000 sheets printed.

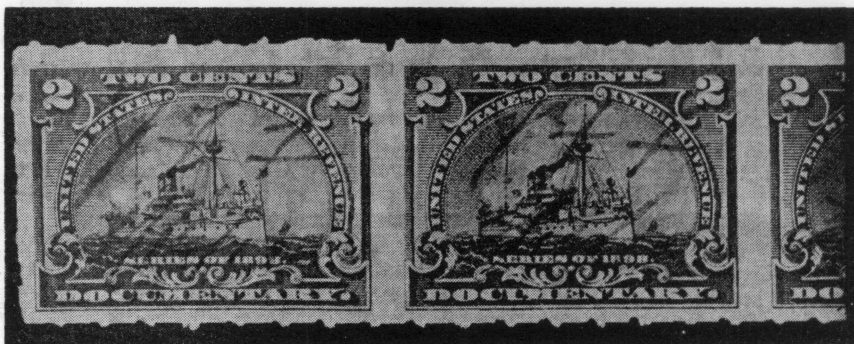
48c carmine with black value and serial and is rouletted  $4\frac{1}{2} \times 6\frac{1}{2}$  black.

Does it also exist slot perf.  $6\frac{3}{4}$  x roul.  $6\frac{1}{2}$  black with large or small serial letter? Let us know if you have it.



## DOUBLE TRANSFERS ON U. S. REVENUES

Charles H. Hermann, ARA #5



Shown in the accompanying photo is a double transfer on the 2c Documentary of 1898. The doubling shows best in "2 TWO CENTS 2" and "DOCUMENTARY". The "M" is badly deformed.

This stamp, roul 5½, is the left stamp in a horizontal strip of 3 with part of top arrow on right edge of the strip so it's in the top row.

Who will report it slot perf. 7 or in a plate block?



Smudgy doubling can be found in many series of the 20 cigarettes stamps.

The 20 cigarette series 113 shown is unusually clear and shows "DE WITT CLINTON" in double lined letters.

### MULTIPLE LISTING AVAILABLE

As promised in the May 1965 issue of this journal, the series of articles on "Multiple Pieces of U. S. Revenues 1862-81" by George T. Turner in The Bureau Specialist has been obtained in reprint form for distribution to members of the American Revenue Association. This booklet of 13 pages lists the known large multiples of First Issue imperforate, part perforate and perforate, the Second, Third, Fourth and Fifth Issues and of the 1871 and 1875 Proprietary Issues. It contains a wealth of valuable information and data and clearly indicates the comparative scarcity of some of the multiples of early revenue issues.

In some cases, surprising as it may seem, the largest known multiples are only pairs, while in a number of items no blocks of four are known. The list is useful to those having multiples of the issues listed to see where they stand in size and perhaps to turn up some large multiples that have escaped so far. The list is available from Robert M. Leard, 532 N. Catalpa Rd., Arcadia, California 91007 for 25c. Any profits will be turned over to the Vanderhoof Fund.

## THE CASE OF THE ELUSIVE CROWS

Frank Q. Newton, Jr., ARA #865



This tale begins at a meeting of the "Alvarado Street Regulars," otherwise known as the Los Angeles Chapter of the A. R. A. While browsing through the writer's meager state revenue collection, Operator #5 (Charles Hermann) spied the illustrated North Dakota Crow Control Stamp of 1945.

Vital statistics are 2 3/8 by 1 1/4 inch in size, perforated 16 to the inch and appears to be printed by multilith which explains the wide brown tonal range.

After "grilling" the owner, nothing could be learned due to the long time-lapse and other complications.

Said Operator #5, under somewhat secret and peculiar circumstances (he wanted one), wrote to the authorities in North Dakota who disclaimed any current knowledge of the affair.

On the face of it one could surmise that there was some kind of fund raising scheme, perhaps for bounty claims.

The status of this stamp compared to listed state revenues and the years and numbers issued needs comment,

which happens to be the purpose of this article.

The solution of The Case of the Elusive Crows will appear in a future issue should the answer prove "fundamental."

*H.R.H.*

THE BEST MARKET  
for

United States Revenues  
is the H. R. Harmer Auctions

COLLECTING? Request the deluxe, liberally illustrated, accurately described auction catalogues. They are free, together with a leaflet "How to Buy at Auction."

SELLING? Ask for the booklet "Modern Methods of Philatelic Selling" explaining the many advantages of utilising Harmer's.

H. R. HARMER, INC.

The World's Foremost Stamp  
Auctioneers

6 West 48th Street  
New York, N. Y. 10036  
PLaza 7-4460

12

## WANTED

U. S. POSSESSIONS REVENUES,  
TAX PAIDS AND REVENUE  
STAMPED PAPER

Spanish and Danish issues as well as during and since U. S. administration. Philippines, Puerto Rico, U. S. Virgin Islands, Mexico U. S. A. Vera Cruz, Hawaii, Alaska, free of tax cigarette labels. Literature on entire world's revenues.

182

ROBERT SHELLHAMER  
ARA 145

2364 Crestview Rd., Pittsburgh 16, Pa.

## PROJECT . . . EXHIBITION PAGES

Irvin Burns, ARA #388

An idea to help increase the knowledge and stature of the various fields of revenue collecting has been under discussion at the Los Angeles A. R. A. meetings. Basically, that which has been suggested is this, that members loan or donate to a project committee, revenue page(s) from their collection. Said pages to be pooled and made available to A. R. A. members for showing at local stamp exhibitions.

The L. A. group has been doing this for the past five years and the results have been most gratifying. In some shows the frames are free and others are paid for by a 25c per member donation. If a member were to inform the local stamp exhibition chairman that this material is available and that it is educational, colorful and would be non-competitive, I am quite sure there would be no charge for the frames.

The committee would select pages

for groups of two frames (18 pages). The first page would be a frontispiece, explaining that the two frames are sponsored by members of the American Revenue Association and that the various pages represent a cross section of what members collect. We therefore assume that a balanced selection would consist of U.S., Foreign, State revenues, Tax Pairs (cigarette, cigar, snuff, tobacco, etc.), Beer, Wine, Match & Medicine, College, License & Royalty, etc.

There are several hundred stamp exhibitions in the United States every year. Our membership covers most of the states. It is conceivable that through this united effort revenue collecting may change from "Oh, you collect that stuff!" to the point where people crowd around our frames to admire the unusual. We have seen it happen here in Southern California and we would like it to happen in your area. Let's have your comments in this matter.

### PRICES REALIZED IN SIEGEL'S 267th SALE, October 6-7, 1964 (cont.)

|      |  |        |
|------|--|--------|
| 897  | M. N. Co. 1919 8 cents Provisional Surcharge, reading up, of Magic Novelty Co. on Large Class A Imperforate (RF11) var.). Faint bend, Fine, Unlisted in Scott  | 67.50  |
| 900  | Large Class A, Roulette 14 (RF12). N. Y. C. C. Co. cancel reading up, sealed tear, V. F. appearance  | 25.00  |
| 901  | Large Class A, Roulette 14 (RF12). NYCC 1919 cancel, reading down, small thin, no roulettes at T., Very Fine appearance  | 67.50  |
| 902  | Large Class A. Roulette 13 in Red (RF12a). Centered, Roulettes R. and B., Centerline T. and L., Red R. P. C. Co. 4-28 '19 reading up, Extremely Fine   | 160.00 |
| 903  | Large Class A. Roulette 6½ Red R. P. C. Co. 4-28 '19 reading down, minute thin in margin, otherwise Fine, Rare, listed but unpriced in Scott   | 80.00  |
| 904  | Large Class A, Perf. 12 Horiz. (RF12c). "Logan Ptg. Hse. April 24, 1919" reading up, small faults, Very Fine appearance  | 45.00  |
| 914  | 8c on 2c Handstamped Surcharge (RF14). Horiz. pair on portion of Austrian Playing Card Wrapper, Very Fine  | 20.00  |
| 916* | 1917 Normal, 1919 Inverted Purple, Provisional Surcharges of Cleveland I. R. Office on 2c Blue (RF14 var.). V. Fine, unlisted in Scott   | 62.50  |
| 917  | Act of 1918 8c in two str. lines, Diagonally Inverted on 2c Blue (RF14 var.). Marginal Block of 4, with another strike in selvege, signed "Geo. B. Sloane," Very Fine, unlisted in Scott             | 250.00 |
| 928  | P. J. W. Co. Aug. 8, 1932 in two Purple Str. Lines, Olympic Games Provisional Playing Card cancel on 10c Documentary (R234). With Playing Card and clipping, Very Fine                               | 42.00  |
| 933  | Civil War Playing Card Precancels Collection of 29 diff., mostly on Playing Card issues includes R2c (16), R17c, R21c, variable quality as always but a most attractive group of these scarce stamps | 160.00 |

**LUCKY FIND**  
**Irvin Burns ARA #388**

Ogden Scoville, A.R.A. #531, told the following story about himself.

In 1962 while traveling abroad he had occasion to visit Madrid and while there he sought out the several stamp stores and U. S. revenues in particular. He found nothing but the most common items.

On a hunch he took in the "flea market" and looked over the stock of some vest pocket dealers. He spotted one item and asked the price. The dealer came back with the price and the classic remark "no chiseling." To this Mr. Scoville reached into his pocket and paid the price—the equivalent of 17 cents U. S.

It is hard to believe but he "liberated" a beautiful copy of the rare 6c Proprietary with a Charles Osgood cancel. The moral of this story would be, if you seek the rarities—look for them in the unusual places!

**ELMER R. LONG**

Death on July 15, 1965 removed one of the best known stamp dealers, Elmer R. Long, ARA #441. He had operated a business in Harrisburg, Pa. for over thirty years. His regular monthly mail sales have often included many nice revenue items.

He is survived by his widow, four children and four grandchildren. The sympathies of the Association is extended to them.

**1765 TAX STAMP BOOKLET**  
**NOW AVAILABLE**

The remaining copies of New Discovery From British Archives on The 1765 Tax Stamps For America which was edited by Adolph Koepfel have been turned over to the American Revenue Association for disposition in order to help replenish the Vanderhoof Memorial Fund from which a loan was made to assist in the publication.

Copies may be obtained from the editor of The American Revenuer. The price is \$3.00 to members of the

A. R. A. and \$4.00 to others.

All the items listed in the May 1965 issue as available from the editor are still available with the exception of four issues of The American Revenuer, December 1948, July-August 1951, September 1955 and June 1960. In addition the following issues are now in the short supply category, March-April 1951, October 1955 and April 1956.

**D. F. HUTCHINSON, JR.**  
**by Bruce Miller, ARA #732**

The stamp of D. F. Hutchinson, Jr. (RO114) is unique in featuring a card of matches as the central design. It appears in the rich lake color favored for match stamps by the Bureau of Engraving & Printing, and is common enough to be an early acquisition of the M&M collector.

Daniel Fuller Hutchinson, Jr. was born in 1845 at Greenfield, New Hampshire. Originally a glazier by trade, he started a wholesale grocery venture in 1880 at Boston, after devoting several years to the sash and blind business. Hutchinson's grocery trade prospered, and he found that matches were one of the items most in demand by the suburban retailers whom he supplied. In order to fill this demand more profitably, he decided to manufacture his own. At first Hutchinson bought ready-made card stock, which he dipped and packed at his home in Somerville. As the business grew, he acquired a small mill in East Boston and made his own stock, although the dipping and packing operations were still conducted at Somerville.

Hutchinson's small but thriving match business continued for about two years. Although no doubt a purely local affair, it eventually attracted the attention of the Diamond Match Co. Early in 1883 the combine bought him out, and Hutchinson continued for some time in their employ, supplying his old customers with Diamond matches. Later he went into dairying, market gardening and flower raising.

## JOB MOSES

Irvin Burns, ARA #388

One of the unusual names found as a printed cancel on battleship revenues is that of Job Moses. I recently had occasion to read a copy of the "Auburn Daily Democrat" for Monday, April 15, 1861. This issue reviewed the surrender of Fort Sumter.

On the front page were two separate advertisements by Mr. Moses. The first was for "Bryan's Pulmonic Wafers" which offered the usual cure-all for everything and was priced at 25c, Job Moses, sole Proprietor, Rochester, N. Y. The second read "The Great English Remedy, Sir James Clarke's, Celebrated Female Pills, Job Moses (Late I. C. Baldwin & Co.), Rochester, N. Y.

It would appear that Mr. Moses was in the medicine field for some 40 years. With this background it is surprising that he never went the route of the private die medicine stamps.

The same page had a cut of the Good Samaritan giving aid to a man lying on the ground, with the caption "B. Denton's Vegetable Healing Balsam, B. Denton, Proprietor, Auburn, N. Y." This cut preceded Scott's No. RS217, (Seabury & Johnson), by more than two years. The point in question would then be, did Seabury & Johnson buy out B. Denton or did they merely use his trademark?

## H. STANTON

by Bruce Miller, ARA #732

Henry Stanton was born in Massachusetts, and established a small match factory at Richfield Springs, Otsego Co., N. Y., in 1852. About 1859 the business was moved to German Flats in Mohawk Co., and in 1864 to Syracuse. From 1866 on, Henry Stanton, Jr., was associated with his father as manager.

The business was conducted under the name of the "Novelty Match Works," and by 1878 was producing 150 gross boxes of matches per day, to be sold throughout New York and New England. Forty people were employed, and capitalization was \$3,000. In December, 1880, the Stanton business was sold to the Diamond Match Co.

---

*Consistent Advertising*

*Brings Results!*

---

## FOREIGN REVENUES

Ask for approvals.

tf

**Bryant-Pollard Co.**  
Proctorsville, Vt.

---

## REVENUE MART

Buy, sell and exchange. 5c per word, minimum 20 words. Name and address will count for 5 words. Send all copy and remittance to Advertising Manager, 1668 Sycamore St., Des Plaines, Ill. 60018

---

NETHERLAND and British Revenues on approval at reasonable prices. W. J. Pieterse, Flint Pond Dr., RFD 1, Nashua, New Hamp. 03060.

CONCENTRATING on Narcotic stamps. What do you have for sale, trade or just to look at? I have some printed pages at \$2.00 per set of 15 pages. John Ruback, 809 Cedar, Duncan, Okla. 73533

177

U. S. Revenues listed and unlisted. Also modern world revenues with emphasis on quality, including U. S. possessions revenue. Some hydrometers and lock seals also available. Want lists for Scott listed items given careful attention. Most consular and foreign service fee stamps available. John S. Bobo, 1668 Sycamore Street, Des Plaines, Ill. 60018.

tf

## SECRETARY'S REPORT

Secretary-Treas. Frank Q. Newton, Jr.  
6730 N. Temple City Blvd.  
Arcadia, Calif. 91007

### New Members

- 1034 Crupain, Eli N.
- 1035 Weiner, Mac
- 1036 Clark, Richard N.
- 1037 Nelson, Iver M.
- 1038 Coble, Wallace Lee
- 1039 Hodgdon, Frank W., III
- 1040 Mangold, Robert H.
- 1041 Michel, William F.
- 1042 Kumar, Santosh
- 1043 Millar, Wendell
- 1044 National Federation of Stamp Clubs
- 1045 Philatelic Journal of Great Britain

### Reinstatement

Stadtbibliothek Munchen

### Applications Received

- Rau, Mrs. H. H., 3102-232 S. W., Alderwood Manor, Wash. 98001, by F. Q. Newton. General Revenues.
- Scheele, Carl H., 2912 North 22 St., Arlington, Va. 22201, by R. M. Leard. Assoc. Curator in Charge, Div. Phil. & Postal Hist., Smithsonian.
- Shaw, William H., 2317 MacDonough Rd., Wilmington, Del. 19805, World 19th, and pre-WWI 20th Cent. except U. S.
- Diamond, James P., 87 Atlantic Ave., W. Sayville, N. Y. 11796, by F. Q. Newton. Mexico, Great Brit., General.
- Gottfried, Oscar, 1440 Broadway, New York, N. Y. 10018, by John S. Bobo. General.
- Silene, Harold B., Jr., 99 Del Mar, San Clemente, Calif., by Donald G. White. Dealer.
- Friedlander, Ronald, 2208 86th St., Brooklyn 14, N. Y., by Fred Dorfman. U. S. only-Scott listed, gen.
- Raasch, Maynard S., 2300 Inglewood Dr., Wilmington, Del. 19803, by F. Q. Newton. Topicals (depicting fish or fishing).
- Furuya, K., P. O. Box 107, Yokohama,

Japan, by John S. Bobo. Japan & Japanese occupations, Dealer.

Schmidt, Henry, 17 Knox Ave., Berwyn, Pa. 19312, by F. Q. Newton. U. S. Revenues only.

Schlegel, Alfred R., 21 Morningside Rd., Presque Isle, Maine 04769, by F. Q. Newton. Foreign Rev. (pre-1900 only), Germany, states and Colonies, Cape of Good Hope, U. S. Poss.

### Address Changes

- Ruback, John C., 809 Cedar, Duncan, Okla. 73533.
- BIA, 2227 Westwood Pl., Falls Church, Va. 22043.
- Fifield, Edson J., P. O. Box 2792 Hamilton Statn., Pompano Beach, Fla. 33062.
- Baughman, Robert W., Box 1176, Liberal, Kans. 67901.
- Robinson, R. E., 14513 Detroit, Cleveland, Ohio.
- MacLeith, Jerry D., 102 Challenge Ct., Foster City, Calif. 94404.
- Schafer, Paul L., Box 917, Gardiner, Oreg. 97441.
- Bulkley, Jonathan D., 70 Broadway, San Francisco, Calif. 94111.
- Sternad, Frank, 1701 13th Ave. So., Apt. B, Seattle, Wash.

### Membership Summary

|                           |     |
|---------------------------|-----|
| Previous membership total | 383 |
| New members               | 12  |
| Reinstatement             | 1   |
| Current membership total  | 396 |

As stipulated in our Constitution, those joining after April 1st may pay only \$1.50 for the balance of the year if he so chooses. New members joining during the months of June, July, August and September will be considered as paid up through October of the year following.

The supply of Rosters is now depleted. We expect to have an up-to-date issue the first quarter of next year.

We are trying to keep the records current so be sure to advise the Secretary if there are any errors in the address on your AR mailing envelope.

# U.S. Embossed Revenue Stamped Paper

ON ORIGINAL DOCUMENTS. MOST INTERESTING TO  
ALL REVENUE COLLECTORS BECAUSE OF ITS HISTORIC IMPORT.

|               |                |               |
|---------------|----------------|---------------|
| RM3 ---- 8.00 | RM156 - 15.00  | RM265a - 3.00 |
| RM11 -- 10.00 | RM162 -- 3.00  | RM265b - 4.00 |
| RM12 -- 12.00 | RM163 -- 2.50  | RM266a - 4.00 |
| RM45 --- 1.50 | RM165 --- 5.00 | RM266b - 7.00 |
| RM46 --- 1.50 | RM167 --- 9.00 | RM275a - 1.50 |
| RM48 --- 3.00 | RM180 --- 4.00 | RM275b - 3.50 |
| RM71 -- 11.00 | RM188 -- 3.00  | RM276a - 1.00 |
| RM72 --- 7.00 | RM189 -- 2.00  | RM276b - 1.00 |
| RM74 -- 12.00 | RM191 -- 5.00  | RM277a - 1.00 |
| RM84 --- 3.00 | RM201 -- 6.00  | RM277b - 1.00 |
| RM85 --- 3.00 | RM202 -- 4.00  | RM278a - 1.00 |
| RM87 --- 3.00 | RM204 -- 9.00  | RM278b - 1.50 |
| RM97 --- 3.50 | RM206 - 15.00  | RM279a - 2.50 |
| RM98 --- 1.50 | RM215 --- 7.00 | RM279b - 4.00 |
| RM100 -- 1.50 | RM217 - 12.00  | RM280A - 2.50 |
| RM102 -- 3.50 | RM227 -- 6.00  | RM281a - 3.00 |
| RM103 -- 3.50 | RM228 -- 4.00  | RM362 - 12.00 |
| RM110 -- 1.50 | RM229 - 15.00  | RM370 -- 1.50 |
| RM111 -- 1.50 | RM230 -- 6.00  | RM371 -- 1.00 |
| RM113 -- 1.50 | RM232 - 14.00  | RM372 -- 1.00 |
| RM115 -- 8.00 | RM240 -- 1.50  | RM373 -- 1.00 |
| RM123 -- 2.50 | RM241 -- 1.50  | RM374 -- 1.00 |
| RM124 -- 2.50 | RM243 -- 2.00  | RM375 -- 1.50 |
| RM126 -- 4.00 | RM245 -- 4.00  | RM376 -- 2.50 |
| RM128 -- 9.00 | RM246 -- 5.00  | RM377 -- 4.00 |
| RM129 - 15.00 | RM260a - 2.00  | RM378 -- 4.00 |
| RM139 - 18.00 | RM260b - 2.00  | RM379 -- 7.00 |
| RM141 - 18.00 | RM261a - 2.00  | RM380 - 10.00 |
| RM149 -- 4.00 | RM261b - 2.00  | RM381 -- 6.00 |
| RM150 -- 2.00 | RM261c - 4.00  | RM382 -- 6.00 |
| RM152 -- 1.50 | RM262a - 5.00  | RM558 -- 3.00 |
| RM153 -- 4.00 | RM262c 10.00   | RM560 -- 3.00 |
| RM154 -- 4.00 | RM263b - 2.00  | RM561 -- 3.00 |
| RM155 - 10.00 | RM264a - 7.50  | RM575 -- 5.00 |
|               | RM264b - 9.00  |               |

177

F. DORFMAN, 30 Amherst Dr., Massapequa, L. I., N. Y.

11761