

AMERICAN REVENUER



Journal of the American Revenue Association

Vol. 27, No. 8, Whole No. 258

October 1973

NEW YORK CHAPTER TO REPRESENT THE A. R. A. AT THE A. S. D. A. SHOW THIS YEAR

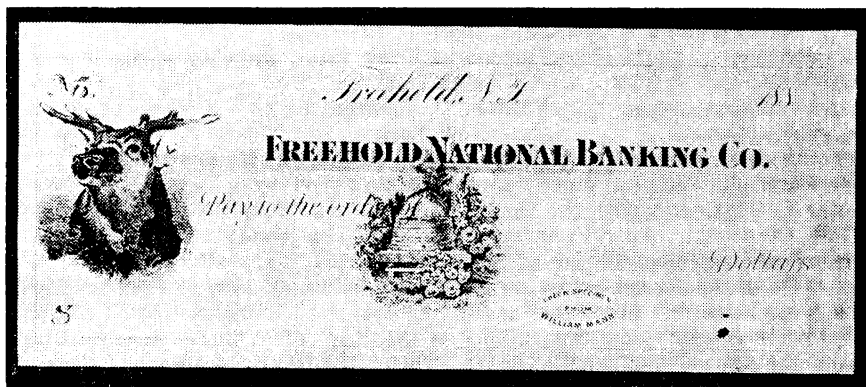
Through the diligent efforts of Brian Bleckwenn, the New York Chapter will be a full participant in the A. S. D. A. Show to be held at Madison Square Garden in New York City on November 16, 17, and 18. The A. R. A. is underwriting the cost of a lounge, and members are committing themselves to an exhibit of approximately twelve frames of fiscal material.

If you were planning to come to New York for the show, you now have an added incentive; and if you weren't making plans to come, we hope you'll start planning NOW.

At least one Chapter member will be manning the lounge at all times, and we expect that it will be a meeting place for all fiscalists, members and non-members alike. Of course we hope to sign up as many non-members as possible.

The New York bunch wants to meet all of you, so stop by the A. R. A. lounge, and bring your friends!

The RN-FAC Report: Section Three



Only one collector's holdings have been viewed this Summer but it surely was worthwhile. Dr. Victor Jordan, Jr. (ARA 1317) has in with his RN sec-

THE AMERICAN REVENUER

Official Organ of the
AMERICAN REVENUE ASSOCIATION

Published monthly (except July and August)

Subscription \$4.00 per year, Single Copy 50c

Second Class Postage Paid at Lawrence, Kansas

Postmaster: Send form 3579 to 821 Vermont St., Lawrence, Kans. 66044

Editor—Drew Nicholson, 18 Valley Drive, Pawling, New York 12564

Assistant Editor—Bart J. Rosenberg, 81 Columbia St., New York, NY 10002

Librarian—William J. German, 57 East Pearl St., Nashua, NH 03060

Advertising Manager—John S. Bobo, 1668 Sycamore St., Des Plaines, IL 60013

Sales Manager—Gerald M. Abrams, 3840 Lealma Ave., Claremont, CA 91711

Asst. Sales Mgr. for Auctions—Donald L. Duston, 1314-25th St., Peru, IL 61354

Office of Publication—821 Vermont St., Lawrence, Kansas 66044

Advertising Rates

Column inch, \$1.50 — $\frac{1}{4}$ page ($3\frac{1}{2}$ inches), \$5.00 — $\frac{1}{2}$ page, \$9.00 — Page, \$15

Contract Rates

for a minimum of five insertions, payable in advance

Column inch, \$1.25 — $\frac{1}{4}$ page, \$4.40 — $\frac{1}{2}$ page, \$8.00 — Full page, \$13.50

Send all ad copy with check to Advertising Manager (address above)

Advertising Forms Close 10th of Month

Editorial Forms Close 1st of Month

Preceding Date of Issue

Preceding Date of Issue

American Revenue Association Board of Directors

John C. Ruback, President

Sherwood Springer, Vice-President

Eastern Representatives:

Anthony Giacomelli and Samuel S. Smith

Central Representatives:

Joseph S. Einstein and I. Irving Silverman

Western Representatives:

Edward B. Tupper and Gerald M. Abrams

Secretary-Treasurer: Bruce Miller, 1010 South Fifth Ave., Arcadia, CA 91006

Vol. 27, No. 8, Whole No. 258

October 1973

tion of his collections a very choice group of RN-Facs.

It was from Dr. Jordan's group that we learned that almost all of the printers who put up FAC bank checks issued samples of their work. Among the ones known previously (and illustrated in earlier Reports) are:

Gast—Alton Nat'l Bank—ILLINOIS

Gast—Planter's & Mechanics Bank—VIRGINIA

Johnson—a neat printed legend at lower right, three lines reading

SAMPLE

Milton C. Johnson

New York

but the check itself was as shown in Fig. 5, Oct. '72 Revenuer.

Cornwell—"empire Tint" sample distinguished by a rectangular box at lower LEFT Center with the legend as follows: SPECIMEN (in an arc) from C. M. Cornwell (printed in reverse on a dark blue band) 247 Pearl St. N. Y. (in an arc matching the arc of Specimen above). Very attractive!

Also in the Jordan group are additional Johnson's—one of each type previously reported and illustrated and a Hanover Nat'l Bank, unused in all cases.

What is new (see illustration) is the FAC of William Mann, different from the known "Seilersville" FAC. This "BEEHIVE" design has these details:

Length—1 27/64"; Height—1 25/64"; Color—Rich Red Orange

Legend—Specimen from, etc. on Signature Line of Sample, L R position.

We are now up to eight printers of RN-Fac checks, with some of them having many designs, and as far as is now known, only one with a single design. Maybe some of the readership will search out some more for us? Please help.

—Joseph S. Einstein

LOUIE'S LAST LINES
or
THE TORCH IS PASSED

Beginning with next month's issue, yours truly will no longer be at the editor's desk. As much as I enjoyed my tenure as editor, I have found over the past several months that I have not been able to give our journal all of the time and attention it deserves.

The A.R.A. is indeed fortunate in having several members who are willing to pitch in and make this organization work. One of these members, DREW NICHOLSON, has volunteered to take over the blue pencil of editorship. All future articles, etc., should be sent to him at 18 Valley Drive, Pawling, New York 12564. Please give him all the cooperation you have given me, as it is no easy task to get this journal into your hands ten times a year.

My final words as chief honcho of the *Revenuer* must be words of thanks. Thanks to our printer, Miller Print Shop, who has had to put up with late copy on more than one occasion. Thanks to our writers, who have managed to fill this journal for us. And thanks to our officers, who have held our organization together for 26 years of growth.

Louis S. Alfano,
Editor emeritus

SPECIAL TAX STAMPS

Wanted—used—1873 to date, all titles with proper coupons (where used) for amount of tax paid. And correspondence, information these stamps and their fore-runners 1790's to 1872.

WENCK — 104 Coachlight Sq.
Bridgeport, Conn. 06606
258-259-262-263-264

**BEER STAMP SURVEY
PROGRESS REPORT**

By Louis S. Alfano

A.R.A. members are a great bunch of people. My plea in the June issue of the *Revenuer* regarding U. S. Beer Stamps whose existence could not be confirmed by members of the New York Chapter met with a fine response. Since some of those reporting desired to remain anonymous, I'll simply say "Thank y'all" and let it go at that. Reports ranged from one or two items to several dozen, with little duplication, and included the discovery of five previously unlisted items.

Still Missing

The following 25 items still have not been reported, if you have any one of them, please let me know as soon as possible so that I can begin preparing a listing for consideration by Scott's in time for the 1975 edition of the Specialized Catalogue. The numbers, of course, are Vanderhoof's:

11a, 17A, 17B, 44A, 76D, 110, 112, 121A, 129A, 137D, 138B, 138Ca, 141A, 141½A, 141½aC, 147, 155A, 164A, 164B, 167B, 173C, 174A, 175D, 177A, and 181A.

Discoveries

These five items were previously unknown, but reported by our members: 38A, 42A, and 43A, all on experimental silk paper, and 54B and 161D.

WANTED

French Indo-China, Cambodia, Laos, Vietnam (North & South)—Revenues and Cinderellas — Singles, Multiples, documents, accumulations, lots, all.

Irving Kopf

81 Colonial Court, Plainville, CT 06062
261

SECRETARY'S REPORT

Bruce Miller, Secretary-Treas.

1010 S. Fifth Ave., Arcadia, CA 91006

NEW MEMBERS

- 1532 STEFANOWICZ, Michael A., 7610 Lexington Ave., Philadelphia, PA 19152, by G. M. Abrams. US, Iceland, Br. Solomon Islands, and material pertaining to US Marine Corps.
- 1533 LILYGREN, Evan, 200 East Broadway, Westerville, OH 43081, by Peggy Howard. US.
- 1534 REED, S. D., 911 Woodland Dr., Rockford, IL 61108, by Herman Herst, Jr. US fed., M&M.
- 1535 SHANSKY, Lee A., 42 W. Poplar Ave., San Mateo, CA 94402, by John Zambarelon. US private die match, med., perfumery; reg. revs overprinted by firms using private dies; Dr. Kilmer overprints.
- 1536 HELMAN, Paul A., 550 Sky Parkway, Apt. #17, Sacramento, CA 95823, by Secretary. All US revs; hand cancels on 1st, 2nd, 3rd issues.
- 1537 CRANE, Leland L., 6375 Second Ave. South, St. Petersburg, FL 33707, by Josef Schonfeld. Chile revs and unlisted materials—seals, etc.
- 1538 LIVINGSTON, Arthur V., Jr., 7 Brantwood Ct., East Brunswick, NJ 08816, by John S. Bobo. Revenue “stamps and special stamps.”
- 1539 HUTCHINS, Curtis M., 55 Broadway, Bangor, ME 04401. by G. M. Abrams. Cuba.

ADDRESS CHANGES

Howard B. Beaumont, 218 Elinor Ave., Baltimore, MD 21236
Ronald E. Leshner, Box 242, Pineville, PA 18946
Mrs. Martiena Richter, 14721 Bellaire, Grandview, MO 64030

Previous membership total -- 592
New members ----- 8
Current membership total -- 600

This month's membership total of

600 represents an all-time high, and reflects a rate of growth that has remained steady over the past several years. (E.g., total membership for October, 1972 was 550, for October, 1971 494, for October, 1970 455, etc.) Much of the credit for this belongs to a handful of active and enthusiastic revenueurs who have consistently and regularly sought out and proposed new members. However, thanks are also due to the postal administrations of the world (including our own redoubtable USPS), whose copious outpourings of gimmicky new issues have driven more and more thoughtful collectors out of the mainstream and into the back-of-the-book. We now have 3D stamps (from a nation whose total literate population could be fitted into the back seat of a Volkswagen), stamps that smell (not, fortunately, from predominantly agricultural countries), stamps that talk (what's "Hello, sucker," in Bhutanese?), stamps that self-destruct (as certain tagged issues are alleged to do), stamps that come in sections like jig-saw puzzles, stamps printed on both sides (double the money, double the fun), stamps that do just about everything except mate and reproduce within the album, or prepay postage on letters. Rowland Hill, you blew it!

We even have non-stamps and unstamps, so-called "philatelic souvenirs," eagerly traded at three-figure prices. These are presumably for stamp collectors who don't really like stamps at all.

On this philatelic funny farm, the ARA is an oasis of sanity. Let's try for 700.

U. S. REVENUE WANT LISTS FILLED

Sideline Material.
Tax Pairs and Foreign Revenues

26011

JOHN S. BOBO
1668 Sycamore St.
Des Plaines, Ill. 60018

MARCH, 1887.

ALL PREVIOUS LISTS ARE HEREBY CANCELED.

❖ A PRICED - LIST ❖
OF
❖ UNITED ❖ STATES ❖ STAMPS ❖

FOR SALE AT LOW PRICES BY

— E. T. PARKER, —

COLLECTOR OF AND DEALER IN

POSTAGE and REVENUE STAMPS OF ALL COUNTRIES and of ALL KINDS,
BETHLEHEM, PA.

A xeroxed copy of the quarto, whose mast-head is shown above, will be sent free to any match and medicine buff who will supply me with a list of or correspondence regarding their M & M multiples (purpose an article on same). Information on multiples or low cataloged singles unlikely to have received lotting in auction catalogs as single pieces is particularly desired. Others wishing a copy of Parker's 1887 priced-list, which is mainly of private die and U. S. revenues, will receive same for four 8c stamps and a stamped self-addressed legal size envelope.

Richard F. Riley

649 Bienvenida Ave., Pacific Palisades, CA 90272

HAU, AHU, UAH, —



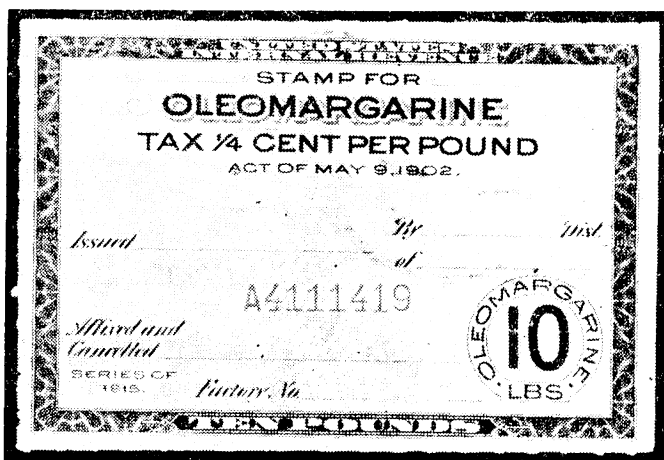
It would seem worth recording the identity of the owner of a revenue cancel as pretty as the monogram cancel illustrating this short note, particularly when an identification can be made with little question of doubt. The monogram, 13x12 mm., looks sharp enough to be printed, though it appears in a somewhat canted position on the stamp, and thus it may be a handstamp. My copy in penetrating red-violet ink is on a very fine copy of RB18b. I had despaired of an identification—was it

HAU, AHU, UAH, AUH—, but along came Bill and Betty Walton's monograph *19th Century Medicine in Glass*, 1971. There on page 93 was a photograph of what is described as a rare, pale aqua bitters bottle circa "1862 with a sticky pontil," monogrammed HUA, the "initials of Hubert Underberg-Albrecht." According to the Wilsons, the bottle shown "contained a concentrate of Maag-Bitters (which) was distributed in a small way during the 1860's and 1870's—". In 1875 Hubert Underberg-Albrecht began distribution of the Boonekampe of Maag-Bitters in a tonic form to many parts of the United States." As the bitters cost \$1.50 a bottle, this called for a six cent tax stamp accounting for the cancel on RB18. Since the firm was selling a concentrate of Maag-Bitters in the 1860's, a similar monogram may exist on first issue proprietaries.

—Richard F. Riley

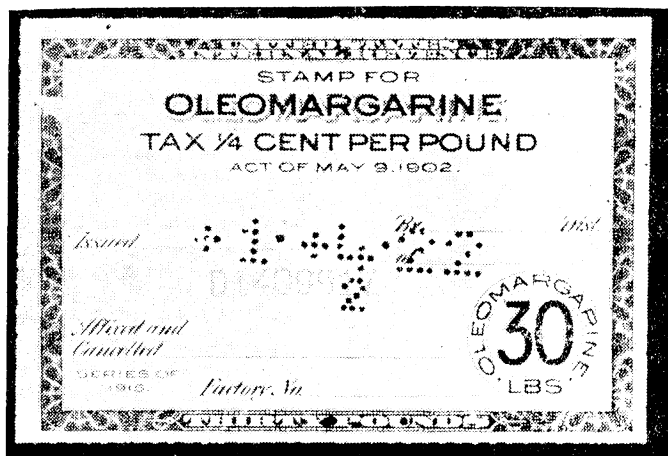
New Varieties of 1915 Oleomargarine Taxpays

By Carter Litchfield, ARA 880



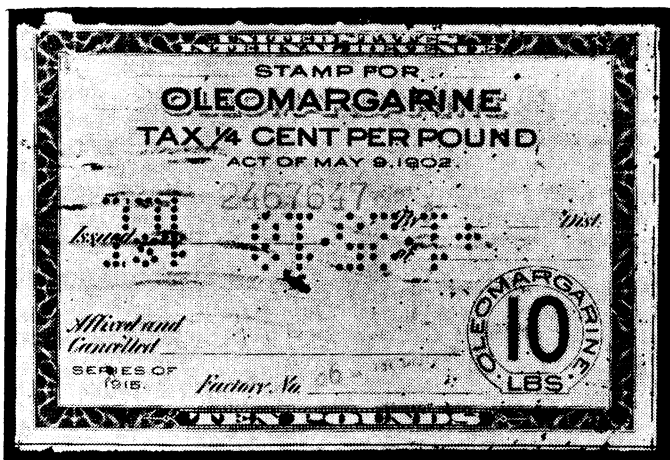
Type I — Rouletted 3 1/2

The 1915 series of taxpays for uncolored oleomargarine is familiar to most taxpaid collectors. The stamps measure 104x70 mm, are rouletted 3 1/2, and are engraved in black with a red control number. They were in use from 1915 to 1926, and 10, 20, 30, 40, and 60 lbs. denominations have been reported by collectors. While sorting through an accumulation of several hundred of these stamps, I recently came across two previously unreported varieties.



Type I — Rouletted 7

The first variety is a 30 lbs. stamp rouletted 7 instead of the usual 3 1/2. It has a perforated January 4, 1922 cancellation. While obviously unusual, this different roulette is not altogether unexpected. Many taxpays issued from the 1910-1935 era are known rouletted both 3 1/2 and 7 when both sizes of rouletting were used simultaneously at the Bureau of Engraving and Printing. Although specifications for the 1915 uncolored oleo stamps must have called for the size 3 1/2 roulette, at least one printing of the 30 lbs. value received an abnormal roulette 7 separation.



Type II — Rouletted 3½

The second new variety is a different positioning of the serial number. While normal stamps have the red control number located below "Issue ----" (Type I), 10 and 30 lbs. stamps have been found with the control number printed considerably above "Issued-----" (Type II). Both stamps are rouletted 3½ and bear perforated cancellations for January 1918 from the first tax district of Illinois. Both upper and lower control number positions were used on the 1916 process butter taxpaid which have a similar size and design, but this is the first time that the upper position has been reported on the 1915 oleo series. The rarity of this new oleo variety would seem to indicate that it was a printer's error. Since the variation exists on more than one value, however, it is likely that a fair number of stamps must have been printed with the control number above "Issued-----".

It is obviously possible that a 1915 uncolored oleo stamp rouletted 7 and with the red serial number above "Issued-----" may turn up, but none have been seen so far. However, the four year difference in cancellation dates between the two new varieties described above makes this combination seem unlikely.

STATEMENT OF OWNERSHIP, MANAGEMENT AND CIRCULATION

(Act. of October 23, 1962; Section 4369,
Title 39, United States Code)

Date of filing: Sept. 28, 1973

Title of publication:

The American Revenuer

Frequency of issue: Monthly except
July and August.

Location of known office of publication
821 Vermont St., Lawrence, Ks 66044

Location of the headquarters or general
business offices of the publishers
1010 South 5th Ave., Arcadia, Cal.
91006

Publisher: American Revenue Associa-
tion, Bruce Miller, Sec, 1010 South
5th Ave., Arcadia, Calif. 91006.

Editor: Louis S. Alfano, 2148 East 38th
St., Brooklyn, N. Y. 11234

Managing Editor: None

The American Revenuer

Owner: American Revenue Association,
Bruce Miller, Secy., 1010 South 5th
Ave., Arcadia, Calif. 91006.

Bondholders, etc.: None

Circulation:

	Avg. No.	Single
	ea. issue	Nearest
	prec. 12 months	filing date

Total no. copies printed	650	690
--------------------------	-----	-----

Paid circulation

Sales thru dealers, etc.	0	0
--------------------------	---	---

Mail subscriptions	544	592
--------------------	-----	-----

Total paid circulation	544	592
------------------------	-----	-----

Free distribution

Complimentary, exchange	5	5
-------------------------	---	---

Copies to news agents	0	0
-----------------------	---	---

Total distribution	549	597
--------------------	-----	-----

Office use, left-over, etc.	101	93
-----------------------------	-----	----

Total	650	690
-------	-----	-----

I certify that the statements made by
me above are correct and complete.

Bruce Miller, Secretary

**CHAPPELL REVISITED—
THE OSGOOD CANCELLATIONS
on
U. S. PROPRIETARY REVENUES**

By Richard F. Riley

Some time ago in response to an enquiry regarding Osgood's cancels, Harold Field loaned me some correspondence on the subject that he had with C. H. Chappell. Chappell (ARA 33, HLM 4) of course is the philatelist to whom we are indebted for the chronicle of the precancelled varieties of the proprietary revenues of 1898 which ran serially in **Weekly Philatelic Gossip** some years ago.

The relevant part of Chappell's letter to Field, dated June 19, 1957, follows:

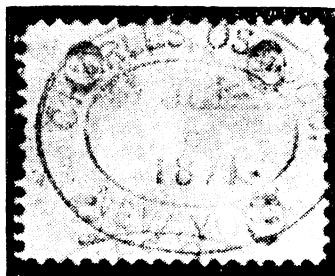
"Enclosed a list of all Osgoods I know of. Won't attempt to type up my finished check list of these until I have seen the 6c first issue and properly written up the oval type description. It will be TYPE 1 in my list of earlies, which have now gone into two completed typewritten volumes.

"My ticker started acting up on me and at the suggestion of my doctor I retired the first of the year—I would have been automatically out July 1st, at the age of seventy (June 27, 1957). So left six months ahead of time."

Chappell died eight months later on February 6, 1958, probably not having come by a copy of the 6c first issued with an oval Osgood cancel.

The enclosed list of "all Osgoods I know of" to which he referred was on a separate page in Chappell's handwriting and it listed 21 varieties. As a memorial to Chappell and as an epilogue to Bert Kiener's story on the Osgoods of Norwich, Conn., in **The American Philatelist**, 87, 597-8 658 (1973), it seems appropriate to place on record a description of Chappell's Type 1 and to insert known varieties into Chappell's list of the Osgood cancels.

TYPE 1. Blue handstamped double oval cancel. The outer oval measures 2.2x2.8 cm. and the inner oval 1.3x1.9 cm. Charles Osgood is printed in



plain capital letters at the top and New York at the bottom between the ovals. Month, day and year are printed in 3 lines in the center, without punctuation.

R31c MAY 18 1871
 JUL 6 1871



TYPE 2. Black single line circular cancel. The circle measures 2.1 cm. in diameter. Charles Osgood is printed inside around the circle at top and the year at the bottom. The month and day is printed in two lines in the center, without punctuation.

R18c SEP 14 1866
 JUL 20 1867
 JAN 23 1868
 MAY 8 1868
 JAN 28 1870#
 JUL 1 1870
 FEB 9 1871 (inverted)
R18d MAR 1 1871# (inverted)
R31c APR 14 1871#
R138 SEP 14 1872#
 OCT 9 1872
RB6a OCT 3 1872#
 MAY 6 1872
 JUN 2 1872
 JUN 7 1872
 JUL 11 1872#
 JUN 2 1873
 JUL 7 1873#

	FEB	11	1874
RB6b	SEP	8	187?#
RB17a	MAR	2	1876#
	JUL	24	1876
	OCT	9	1876
	FEB	28	1877#
	JUN	1	1877#
	AUG	2	1877
	FEB	4	1878
	MAR	4	1878
	APR	4	1878#
	JUL	2	1878
	JUL	8	1878#
	SEP	5	1878
	FEB	4	1879
	MAY	9	1879
RB17b	APR	4	1879
	MAY	2	1879#
	JUL	2	1879#
	OCT	11	1879#
	MAY	5	1880#
	JUN	3	1880
	OCT	2	1880
	JAN	13	1881
	NOV	7	1881
RB18b	SEP	7	1881
	OCT	7	1881#
	MAR	?	1882#
	APR	6	1882
	MAY	6	1882
	JUN	4	1882
	JUL	4	1882
	SEP	4	1882#
	OCT	7	1882#
	NOV	7	1882
	MAR	8	1883

Varieties in the original Chappell list.

In general the cancels are reasonably well "socked on the nose," although probably printed by hand. Chappell noted that several in his list had somewhat canted strikes, a distinction which has been omitted from the list above.

I have been aided and abetted not only by Harold Field and Bert Kiener in this compilation, but also by Abe Hochman and Frank Newton, Jr. We are indebted to Frank Newton for the photo of the scarce R31 with Osgood cancel. From the ease with which Field, Hochman, Kiener, Newton and I added new dates to Chappell's list, we can be certain a large number of still unlisted dates exist.

MORE ON THE CATALOGS

The French Colony effort is rapidly nearing completion, and the final manuscript is in typing now. There is one area which needs work, and help is solicited from any source: that is the listings for the Algerian tobacco strips. Any one able to help button up this item should immediately contact . . .

G. M. Abrams

CIRCUIT NOTES

The column this month is intentionally brief, as elsewhere appears auction 8. Peruse carefully, study the rules, and bid early.

One comment before closing . . . Queries have been received as to why the ARA auctions are not set up in format similar to that used by the commercial auction houses; i.e., listing US material first in catalog sequence, and then the foreign alphabetically and in some sort of catalog order. The answer is simple: The lots are listed as received.

Were we to try it the other way, since material arrives in mid-auction for the next one, and continues to arrive up to and including the deadline date for mailing the listing, to attempt to list 500-1000 lots at the last minute in orderly manner would be impossible, and the press deadline would never be met. Further, the auction houses (for the most part), carry a trained staff of several people to make these lists, and it is much easier for them to carry out the arduous task, months in advance of the appearance of the sale, and very well coordinated. The ARA staff for the auctions numbers 1, and in that effort we do the best we can. Questions?

Luck with your bids.

G. M. Abrams, Sales Mgr.

EXAGERATED?

Noted in a recent auction appearing in the Western Stamp Collector: Lot No. xxx Forbin Revenue

Catalogue 1915

Est. value \$100.00

Any comments?

—G. M. Abrams

Auction #8

1. Only A.R.A. members in good standing are eligible to participate in the Auction.
2. All lots are sold to the highest bidder at a slight advance over the second highest bid in accordance with the following tabulation: to \$2 by 10c, to \$5 by 25c, to \$10 by 50c, to \$20 by 75c, to \$50 by \$1, over \$50 by \$2. Bids in pennies or nickels are automatically reduced to the nearest level. The right is reserved to withdraw any lot prior to the sale, or to group two or more lots. If only one bid is received for any lot, the bid shall be reduced to the SB, MB, or CV where applicable. If the bid is less than the SB or CV, or for an OPEN lot, the bid shall stand without reduction, except where rule 6 is invoked for bid rejection.
3. Bids may be submitted on any paper and in any format, but should list Lot No. and bidder's maximum bid. (Winning bids will be adjusted as applicable per Rule No. 2.)
4. Mailing charges are payable by the purchaser, the minimum charge being 50c, higher sums will be charged only if actual charges are higher. Insurance, certification, or registration extra at bidder's expense; if desired, advise with bid. The A.R.A. assumes no responsibility for any parcels lost in the mails for lack of use of the above methods of mailing.
5. Invoice will be sent in advance to successful bidders, and lots forwarded upon receipt of full payment. Mail all bids and payments to the Sales Manager in Claremont, California, making all checks payable to the American Revenue Association (except Postal Money Orders, which should be made out to the Sales Manager by name in order to facilitate cashing).
6. Title shall remain with the A.R.A. Sales Department, acting on behalf of owners, until payment is received. The Sales Manager shall regulate the bidding, and reserves the right to refuse any bid believed by him not to be in good faith, or to act on behalf of the seller.
7. In case of tie bids, earliest postmark will be considered the winner.
8. Care has been taken to describe lots correctly. If, after the lots are delivered, the winning bidder for a lot shall prove that it has been wrongfully described, or damaged and not so noted, the bidder shall be at liberty to reject the lot within ten days of receipt, after agreement has been made with the Sales Manager. This Rule does not apply to lots marked "AS IS" for which see Rule No. 12.
9. No charge is made for executing bids, and the Sales Manager will act in the best interests of the bidder. However, he cannot accept responsibility for errors, omissions, or differences in judgment. Unlimited "buy" bids are not accepted. Bids with a plus sign (+) will be executed at one advance over a tie bid; while bids with two plus signs (++) will signify willingness to go somewhat higher.
10. Suggested Bid (SB) is owner's estimated value. Bid on these lots as you wish; same applies to "Open" and "CV." Minimum bid (MB) is owner's minimum acceptable bid, and no bids below the minimum will be entered for such lots.
11. SE means straight-edge, CV means catalog value (Scott Catalog numbers and values used unless otherwise specified). A hyphen between two numbers (viz. #R45-55) indicates that all of the stamps between the given numbers are included: diagonal bars (viz. #R45//55), indicate that all of the intermediate stamps are not necessarily present, and that no more than the number of stamps expressly stated should be expected. Where catalog numbers are given for State Revenues, the Hubbard-S.R.S. catalog is used.
12. Lots marked "AS IS" have not been counted, sorted, or appraised by the Sales Manager, and are not returnable in whole or part for any reason. The descriptions and estimated values of such lots are the owner's. "AS

IS" lots may include quantities of cheaper stamps, extensive duplication, and/or stamps in less than fine condition. Bid accordingly.

13. Stamps described as having defects may not be returned because of defects; original gum (OG) is not to be expected unless specifically mentioned.
14. For duplicated lots, bid "either-or."
15. The placing of a bid constitutes full acceptance of the foregoing Rules.
16. A list of prices realized will be published in the **American Revenuer** as soon after the sale as possible.
17. Bid closing date, Thanksgiving day.

Lot No.	Description	Value
1	Lombardy-Venetia, specialized collection of 604 diff., perf varieties, errors, varieties, etc. ----- MB	350.00
2	Switzerland, collection of about 4,100 diff revenues, many rare pieces; (federals 200, cantonals 2,450, municipals 1,450); a beautiful (more than) starter ----- MB	1000.00
3	Italy and LV, collection of 4350 diff., including 950 LV, with diff perfs and errors; 650 Italian colonies, and 525 municipals; balance Italy federal ----- MB	900.00
4	Switzerland, smaller collection of 1240 diff., including federals, cantonals and municipals ----- MB	150.00
5	USIR dated docs, mix of items in varied condition, R268//639, many used uncut, many perf 4 sides; includes SE and cut canc. CV	60.00
6	USIR, R644, 8 copies, all used uncut, perf 4 sides; also R639 (2 copies) and R644 (5 copies), both with SE, but uncut; varied centering ----- CV	178.50
7	USIR, mix of undated docs, few props, R171//733, many used uncut, many perf 4 sides, as well as few SE, cut cancels, etc. CV	60.00
8	USIR, R673, 29 copies perf 4 sides, and 15 SE copies, all good to fine centering, all used uncut ----- CV	88.00
9	USIR, R677, 17 copies perf 4 sides, and 11 SE copies, all good to fine centering, all used uncut ----- CV	42.00
10	USIR, R678, 4 copies perf 4 sides, and 14 SE copies centering varied, few with faint creases; all used uncut ----- CV	108.00
11	USIR, R680, used uncut, SE right, small tear top, good centering (to top); R724, used uncut, SE top and right, good centering, thin at lower left perfs; another R724, used uncut, good centering, SE right, creased ----- CV	37.50
12	USIR meter strip, documentary, PB meter 10245, dated 1965, unused, OG, perf 4 sides; carmine on yellow safety, view of building, 8½x1¼ inches; value 000.00 -----	OPEN
13	Mix of 22 diff state revs, (with few USIR consular and playing cards, damaged and no charge) ----- SB	2.00
14	Group of approx 110 diff pre-WWII foreign revs, telegraphs, other non-Scott material; condition varied ----- SB	4.00
15	Mix of Scott USIR, R1//R152, in varied condition, generally fine; also included are groups of early docs, some wines, battleships and playing cards; condition good to fine ----- SB	12.00
16	Calif. docs, Hubbard D197 and D214, 80c and \$5 values, each in lightly canceled imperf block of 4, very wide margins; slight stains in 80c block margin and small creases in \$5 block -- MB	10.00
17	US Newspapers: PR4 (folded in center, 2 thins, SE top); PR2 (folded in center, 2 border tears, perfs faulty in spots); PR3, fine, few faulty perfs ----- CV	35.00
18	USIR mix of 23 items, with telegraphs, cigar strips, oleo, imported cigar custom strips, etc. ----- SB	4.00
19	Document with USIR tied: 2wo 1899 ornate insurance policies,	

	one with R166, other with R163 and R167; Deed, 1900, with R168 and R171: Bill of Lading, B&O RR, 1900, with R163 -----	SB	5.00
20	Group of 14 bankchecks, all 19th and early 20th century, all with R164 tied -----	MB	2.00
21	USIR, RB23p, mint arrow block of 4, bottom arrow -----		OPEN
22	USIR, group of battleships: mint blox of 4 of RB20, 21, 22, R163 and R169; mint block of 12 of R163; and complete set of mint singles of RB20 thru RB31 -----	MB	5.50
23	USIR, group of 56 misc. revs, average condition, including some M&Ms, and also 11 used battleship blocks, r and p, with hand-stamps, pen cancels, etc.; some duplication, condition varied	SB	4.50
24	USIR: 34 earlies with handstamp cancels, mixed condition, some duplication, and 4 fotocards with R13 attached -----	SB	3.00
25	USIR, R164, IR surcharges, group of 3 pairs and 1 single, all with plate numbers; the single damaged -----	SB	1.50
26	USIR, group of 40 revs, varied issues, mostly space fillers --	SB	1.00
27	Cinderella items, mix of few hundred, includes foreign revs, some scarce, seals, locals, registration labels, etc. -----	SB	5.00
28	Latin American revenues and telegraphs, 74 diff., mostly Salvador and Nicaragua -----	SB	5.00
29	New Zealand, 23 Social Security and Unemployment revs, plus 2 high value blox of 4; 14 railway newspaper stamps, including 3 plated strips of 4, containing varieties within the strip ----	SB	5.00
30	Pennsylvania stock transfers on paper, bagful of approx. 1775 stamps, mixed values, mostly cut cancels -----	SB	15.00
31	Mix of foreign seals, revs, cinderellas, etc., about 145 items, large variety; condition varied -----	SB	7.00
32	Nevada, Hubbard D1, mint imperf, minute stains, est. \$25 --	MB	15.00
33	Alabama, D1a, roul., fine used, embossed and pen cancel, est. \$25	MB	15.00
34	California Doc, Hubbard D3, first Bill, fine used, cut square (not to shape), used, nice mono cancel; est. \$25 -----	MB	15.00
35	Same, cut round to shape, second Bill, est. \$25 -----	MB	15.00
36	Same, cut round, D7, second Bill, est \$10 -----	MB	5.00
37	Same, cut round, D6, third Bill, pin hole, est \$10 -----	MB	5.00
38	Same, cut round close, Insurance, D170a, est \$10 -----	MB	5.00
39	Same, cut round, Insurance, D158, est \$10 -----	MB	5.00
40	Oregon, Hubbard D3, mint no gum, est \$10 -----	MB	5.00
41	South Carolina, Hubbard D31, \$100 brown, cut cancel, SE left	MB	5.00
42	Same, perf 4 sides -----	MB	5.00
43	Virginia, Hubbard D1, embossed notary cancel, VF, est \$10 --	MB	5.00
44	New York Stock, ST116, cut cancel, est \$10 -----	MB	5.00
45	Calif., recent doc, Tehama County, map type, \$110 face, SE left, pen cancel -----	MB	5.00
46	Kentucky beer, B5, block of 4 imperf left and bottom; upper right stamp has red serial no. at base, others none -----	MB	5.00
47	Mississippi Beer/wine, BW 7, used, few small creases, est \$10	MB	5.00
48	Same but BW7a, creases, thins, est \$10 -----	MB	5.00
49	Michigan beer, B18a, fine unused, est \$10 -----	MB	5.00
50	Same, B7, fine unused, perf vert thru center, est \$10 -----	MB	5.00
51	South Carolina, terrapin TE1, SE right, fine unused, est \$10	MB	5.00
52	Louisiana, Insect/Fungus IF 25d, with mss 6, crease, otherwise fine unused -----	MB	5.00
53	Montana, punchboard PR8, VF unused, est \$10 -----	MB	5.00
54	Same, PB10, VF used, pen cancel, est \$10 -----	MB	5.00
55	Missouri, Cooper County Debt., CO-ST1, unused, est \$10 ----	MB	5.00
56	California Liquor, L15a (clear roulette), unlisted, est \$10 --	MB	5.00

57	Alabama, mint unlisted doc, \$5 green, state seal with rays, 20x40 mm., SE top; VF mint -----	MB	5.00
58	Colorado, Wine/Liquor WL18, SE left & base, VF mint, est \$10 MB	5.00	
59	Florida doc, D20, \$100 values, centered to right, otherwise VF used; pen cancel -----	MB	5.00
60	Florida tangerine, TA14, fine used, SE base, est \$10 -----	MB	5.00
61	Hawaii, perf reissue of R5, VF mint -----	MB	5.00
62	Ryukyu revenues, third issue, mint 1c and used, 3c and 5c on piece, all VF -----	MB	2.50
63	Ryukyu revenues, third issue, mint block of 4 of the 5c, VF--	MB	4.00
64	Same, mint block of 4 of the 10c value, VF -----	MB	4.00
65	Same, unlisted Sera mint block of 12 of the 8c on 4c violet revenue, with corner selvage -----	MB	37.50
66	Taiwan rev., Bendig R49, used -----	CV	6.50
67	Same, R50, used -----	CV	30.00
68	Same, R67, used -----	CV	3.00
69	Same, R10, 11, 12, 13; used -----	CV	4.75
70	Italian municipal revenues, collection 1400 diff -----	MB	75.00
71	Italian sphere revenues, LV 218 diff, Federal and colonies 576 diff, municipals 50 diff; total 844 diff -----	MB	120.00
72	Spain and Portugal, 322 diff revenues -----	MB	35.00
73	South America, 1122 diff revenues -----	MB	100.00
74	Germany, 362 diff revenues and Railroad stamps -----	MB	55.00
75	Belgium, 231 diff revenues -----	MB	25.00
76	Mexico, 337 diff revenues, into the 1940's -----	MB	50.00
77	Italy, 50 Lusso i Scambi revenues, large and small sizes --	SB	5.00
78	NY Corp. Debenture Bond, with 2 USIR dated docs tied, 10c and \$1, unpunched, 1946 docs, 1956 bond -----	OPEN	
79	Canada, lot of 97 diff. BNA revenues on approval pages, condition good to VF; some rarities; CV Sissons \$45.12 -----	MB	12.00
80	Canada, Ontario 1928 Gasoline Tax (Law stamps surcharged), Sissons R100/108, mint NH cpl with blue C on gum; some gum wrinkles; CV 35.00 -----	MB	20.00
81	Canada, Sask. Law, Sissons R43, centered left; good used; unpunched; CV \$3 -----	MB	1.00
82	Same, Quebec R53, good used, perfs cut left, unpunched; CV \$5 MB	2.50	
83	Same, Sask. R54, nice center, unpunched, used; CV \$3 -----	MB	1.00
84	Same, Sask. R55, centered to top, unpunched; CV \$5 -----	MB	2.00
85	Same, Ont. R64, 2 copies, one light shade, one dark; punch cancel; center OK, CV \$7 -----	MB	3.00
86	Same, Ont. R66, punch cancel, center OK; CV 9.50 -----	MB	4.50
87	Same, Ont. R84, punch cancel, otherwise F-VF; CV 6.00 --	MB	3.25
88	Same, Ont. R86, punch cancel, center OK; CV 7.50 -----	MB	4.00
89	Same, Ont. R87, punch cancel, center OK; CV 15.00 -----	MB	7.00
90	Same, Ont., R88, punch cancel, center OK; CV 20.00 -----	MB	9.00
91	Same, Ont. R89, punch cancel, center OK; CV 10.00 -----	MB	4.50
92	Same, Ont. R91, mint NH fine, blue C on gum; CV 100.00 --	MB	55.00
93	Same, Ont. R132, mint NH superb, blue C on gum; CV 6.00 MB	4.00	
94	Same, Ont. R134, mint NH fine, blue C on gum; CV 25.00 ----	MB	12.50
95	Seals and labels, fine collection of 186 items, Belgium, Netherlands, Czech and Yugoslav, Portuguese, etc. -----	est	4.00
96	Similar collection of Scandinavian items, 288 pieces -----	est	8.00
97	Similar collection of 536 Spanish items -----	est	10.00
98	Similar collection of 59 Swiss and 90 Italians -----	est	4.50

Note: In the above 4 collections, duplication exists but was not included in the count.

99	Auction catalogue, Scott Stamp & Coin, 1901 issue, many revs included; notated with prices realized for many M&Ms; interesting; slight aging -----	MB	2.50
100	Auction catalogue, 1966, Siegel sale of Holcombe M&Ms and revs; no realizations noted; good condition -----	OPEN	
101	Electrostatic copies of these M&M studies: Dr. John Bull Private Props, by Schrader (5pp); Excelsior Match Co., by Holcombe (6 pp); and Holcombe's Piso Co. (2 pp) -----	OPEN	
102	Mess No. 1: 3 mint undated docs, 5 purple narco strips (with flaws), 2 oleo taxpays, 1 used set postal notes, 61 battleship docs; condition varied -----	SB	3.00
103	USIR Ducks, used, RW16 thru 23, and RW28; mostly good condition, some fine; CV 1.50 each -----	CV	85.50
104	USIR potatoes, RI1-9, unused, some hinged; good -----	CV	4.95
105	New Jersey trout stamps, complete (both values) mint from 1959 thru 1967, VF -----	MB	18.00
106	New Jersey Woodcock stamps, \$3 face, 1967 and 1968, VF mint	MB	3.00
107	California, 18 state revs -----	SB	2.00
108	California. strip of 4 Bill of Lading stamps, \$100 face each on blue paper, Hubbard D9 -----	SB	10.00
109	Similar, \$2 face each, strip of 4, D4, on white paper -----	SB	8.00
110	Similar, Insurance, 12 month, strip of 4, \$2 face each, D171	SB	8.00
111	Canada, Sissons R74, 75A, 76; used with small punch cancel, otherwise VF -----	CV	10.00+
112	Similar, R74, two mint VF copies, two diff shades, bright blue and green blue -----	CV	10.00
113	Similar, R76, mint VF single -----	CV	7.50
114	Similar, R72, mint single, F-VF -----	CV	10.00
115	Canada, misc revs, R143, 147, 148, 149, 150, 172, 175, 203, 204, 205, 206, 208; all mint VF -----	CV	18.25
116	Canada, mix of 17 revs, some large; condition varied -----	SB	1.50
117	USIR narcotics, two 1c strips, RJA42b and 43d; good condition	OPEN	
118	Philatelic exhibition seals and labels, souv. sheets; 50 diff. items, some rare (?); plus a few other surprises -----	SB	2.50
119	Similar lot, 50 diff items; also with surprises -----	SB	2.50
Note: Lots 118 and 119 above are for the gamblers. No returns.			
120	Check, Hongkong & Calif. Trading Co., used 1922, Chinese inscriptions at left; on rear, block of 4 of Geo. V Hong Kong rev, each ovptd B of E; date stamped. Check folded, stamps creased	OPEN	
121	Sight Draft, ornate engraving of Columbia and eagle at left, used in 18__(?); crease in center; nice -----	OPEN	
122	Similar, used 1853; ornate design at left, vignette of sailing vessel center top; slight aging base, faint crease -----	OPEN	
123	Check, drawn on Bisbee, Arizona bank, 1907, in silver pesos, by mining company; on rear, Mexican rev tied; folded; stamp OK	OPEN	
124	Check, Sao Paulo Brazil, used 1926; ornate monogram at left; on rear, Brazilian revenue tied, date stamped. Check creased, stamp fine -----	OPEN	
125	Group of checks, one handwritten, 7 normal, all with early US revs tied; interesting; mixed condition, used late 18's -----	OPEN	
126	Similar, but with very ornate engravings each check, group of 9 used 18's, sailing vessels, Columbia, trains, capitol, etc.; all with early US revs tied -----	OPEN	
127	Sight draft, 1853, little vignettes in all directions; New York Bank; fine condition -----	OPEN	
128	Checks, all on Iowa banks, group of 10, some with engravings;		

	used and mint; 1920's; condition mixed -----	OPEN
129	Similar group of 26 Colorado checks, mint and used -----	OPEN
130	Similar group of 28 Oklahoma checks, mint and used -----	OPEN
131	Similar, Oklahoma Territory, 2 used, 1 mint (1911); the used ones are cancelled OT -----	OPEN
132	Similar, 4 checks in Brooklyn, used 188...; vignettes on each --	OPEN
133	Similar group of 17 Kansas and Iowa checks, mint and used, some engravings; condition mixed -----	OPEN
134	Group of 3 checks used 1905-06 in Oklahoma Indian Territory, creases, cut cancels -----	OPEN
135	Group of 9 Bronx checks, used 1897-1909; one with a vignette of Jonas Bronck (himself); mixed condition -----	OPEN
136	Stock certificate, 1866, very ornate engraving of the Boston & Worcester RR Corp, early Boston; with RN-T3 in carmine shade dead center; document punched at base, folded, small tear right edge; still looks pretty good -----	OPEN
137	Check, unused, dated 187..., with RN-L1 in ultra shade, Denison, Texas; gum stains on rear -----	OPEN
138	Similar, Denison, Texas, with RN-L4 in blue green shade -----	OPEN
139	Similar, Phila., Pa., with RN-L3 in grey olive shade -----	OPEN
140	Check, Cleveland, used 1885, with RN-G1a (on rear), cut cancel, and another used 1882 in Leadville, Colo., also cut cancel ----	OPEN
141	Stock cert., 1872, Panama RR Co., drawn in NY; with RN-U1; few small punch holes at base, pinhole cancel near top -----	OPEN
142	Portion of unused check containing RN-U1; ovptd in small lettering reading down in center: Stamp returned to the Commissioner of Internal Revenue for redemption, October 1, 1872 -----	OPEN
143	Insurance Policy, Niagara Fire Insurance Co., 1872, with RN-Q1 in center; few horiz. creases; looks fine -----	OPEN
144	Cut square of RN-Q1 from unused document, wide margins ----	OPEN
145	Same for RN-Q2, on script-covered unused document portion -	OPEN
146	USIR wines, 2-RE33, 2-RE43, RE36, RE46; used, mostly fine SB	6.25
147	Germany, 94 diff better revs., good condition -----	SB 5.00
148	Panama, 1938 receipt document, folded, with 1c olive rev. tied	SB 2.00
149	China, 45 diff revs, all fine condition, few cigarettes, etc. MB	3.50
150	Fiume and Trieste, + few good municipals, 52 diff items -	MB 4.00
151	British African Revs, includes S. Rhodesia, Tangan., Cape, Orange River, Natal, etc.; good condition; 48 diff. -----	SB 5.00
152	British South Africa (Union), 40 diff revs, mostly fine --	SB 4.00
153	Japan, mix of 51 revs, includes 7 values of Rice Inspection	SB 2.50
154	Canada, Sissons R181 used fine strip of 4 and 1/8Lb. black tobacco block of 4, also fine -----	SB 5.00
155	India states, 52 mostly diff revenues, all sizes, mostly fine	SB 5.00
156	Group of 140+ worldwide revs, some seldom seen, better material; mostly fine; includes rarities -----	SB 15.00
157	USIR, RS39, VF used, small crease -----	MB 2.00
158	Griqualand West, Cape ovptd black G inverted on QV 1 penny issue; mint -----	MB 7.00
159	Egypt, 20 diff 19th cent. interpostals, round stamps, all unused, mostly fine -----	MB 3.00
160	Same as lot 159	
161	Worldwide lot of revs, 150+ items, duplication, some seldom seen; for the dealers -----	MB 4.00
162	Similar lot, over 225 better items, mostly Br. Colonies; all diff; mostly fine+, some punched -----	MB 20.00
163	USIR, Wine RE133, 30c value, full sheet of 100 -----	MB 15.00

164	USIR, Playing card RF28, bottom margin block of 8 -----	MB	15.00
165	Italy. mix of several hundred revs, not usual variety; mostly larger stamps; much duplication (dealer's lot) -----	SB	40.00
166	Mix of world revs, mounted by owner (19th century); dealer's lot, hundreds of older revs, much duplication, of Germany, Austria, Poland, Hungary, France, Belgium, Russia, Japan, etc.; some rare	SB	50.00
167	Argentina, Santa Fe Fomento, dealer's lot of well over 5,000 stamps; double stamps from 1910, 1914, 1915, 1916 and 1921, all unused	SB	65.00
168	Canada, Sask. Iaw, Sissons R34, 100 copies, fine used -----	CV	45.00
169	Similar, R36, 100 copies, fine used -----	CV	40.00
170	Similar, R37, 100 copies, fine used -----	CV	50.00
171	Similar, R39, 100 copies, fine used -----	CV	50.00
172	Argentina, Bucros Aires issues mix, 1916 high value municipals, 43 items in blocks, etc., plus large Avisos, 9 copies; all mint -	SB	5.00
173	Argentina, Catamarca; 5c ovptd 1906, multiple of 26 -----	SB	2.00
174	Argentina, Esperanza; double stamp of 1924, 18 pairs multiple	SB	3.00
175	Same, 1928 2P value, 12 copies -----	SB	2.00
176	Salvador, Forbin #93, 89, 104, 123 and 125, mix of 312 stamps in partial sheets of 20, etc., almost all unused; plus full mint sheet of 100 of 1916 5c municipal -----	SB	15.00
177	Salvador, Forbin #27; block of 10 showing 19 normal and 1 reversed base ornament; unused -----	SB	10.00
178	Similar, #28, block of 10 showing 19 normal and 1 vertical base ornament; unused -----	SB	10.00
179	Same as lot 178		
180	Similar, #29, strip of 5 showing 3 diff arrangements of base ornaments -----	SB	10.00
181	Same as lot 180		
182	Similar strip of 5 showing 4 other arrangements -----	SB	10.00
183	Same as lot 182		
184	Switzerland, Vaud Droits Reels, Forbin #8 (block of 25), #15 (same), #22 (same), and #24 (8 full sheets of 50); all mint, dealer's	SB	10.00
185	Germany, dealer's lot of full sheets and multiples of various revs; some sheets show the cumulative totals in the borders; all mint; total 500 stamps -----	SB	40.00
186	Poland, multiple of 39 recent (?) revs, 50 Groszy on 20 Gr. dark green; all mint -----	SB	4.00
187	Nyassa, issue of 1904 (unpriced Forbin); 70 each 100R value (mostly blox of 4), 8 of the 200R value, 2 of the 300R value, and full sheets of 30 of the 500R value; all mint -----	SB	7.50
188	Brazil, Matches (Fosforos), Forbin #3; 20R imperf sheet of 100 in dark violet, plus block of 40 in lilac; all mint -----	SB	6.50
189	Venezuela, 1878 Sello, Forbin #1; 3 mint blox of 6 showing various typeset varieties in each block; blocks vary -----	SB	5.00
190	Philippines, Derecho Judicial, Forbin #2; 1 block of 40 and 1 of 25; total 65 stamps, all mint, imperf.; 1 torn -----	SB	5.00
191	Costa Rica, Forbin #5; mint sheet of 40 showing the pronounced sheet watermark of London -----	SB	3.00
192	China, postal savings issue, full sheet of 200, with plate number and inscriptions in border; 20.00 orange face each -----	SB	3.00
193	Cuba, Matanzas unlisted provincials; 20c yellow; partial sheet of 84 stamps; about 7 with holes -----	SB	4.00
194	Colombia, Bogota Avisos, Forbin #1 (Page 263); block of 8 which includes 2 blocks of 4 tete-beche with gutter between; mint, imperf; some crease at edges -----	SB	5.00
195	Colombia, Forbin #76, full mint sheet of 30; includes 2 blox of		

	15 separated by small gutter; 1 stamp torn -----	SB	7.50
196	Ceylon, 5 values of current revenue series: 20, 50, 100, 500 and 1000 Rupees; all fine used; retail 17.00 -----	MB	10.00
197	Malta, mix of 100+ revs, all reigns to Geo. V; all used; much duplication; dealer's lot -----	SB	5.00
198	Handwritten receipt, dated 1866 (in letter format), with RN-A1 (black) printed upper left; folded; otherwise VF -----	OPEN	
199	Check, very ornate, 3 separate vignettes of lady, slave and farmers; with RN-C11; small stain in corner; folded; pretty, used 1872 --	OPEN	
200	Similar check, used 1873, reddish brown, with vignettes (2) of girl with dog and mfg plant; this one cut cancel; folded -----	OPEN	
201	Check, unused, with RN-D1; Specimen inscriptions in stamp and in LR corner; vignette of horseman at left; creases -----	OPEN	
202	Check and a half, with inverted RN-F2 in between; unused, creases; conversation piece -----	OPEN	
203	Check, with RN-F2, unused; this one has double inscriptions of all the text on the check (but only one stamp); thin spot left of center; otherwise another conversation piece -----	OPEN	
204	Essay (proof?) of RN-G1, light shade, on white paper; left edge tear; no other inscriptions -----	OPEN	
205	Similar RN-G1 item, this one printed below and across portion of bottom edge of check; printer's waste? proof? essay? -----	OPEN	
206	Essay (proof?) of RN-F1 on white paper; faint crease; no other inscriptions -----	OPEN	
207	Check, unused, with RN-C5 (dull red); very ornate, with boy (girl?) at left, locomotive upper right, ornate border -----	OPEN	
208	Check, unused, with RN-D1; salmon paper, vignette of Washington at right, lady feeding chickens at left; ornate border; crease ---	OPEN	
209	Sight draft, used 1901; London, Paris & American Bank; with RN-X7; herringbone pattern in paper, ornate bank vignette at left; folded, perfin top, but good looking -----	OPEN	
210	Check, used 1875, with RN-K6; Washington on horseback at left; eagle (spread wings) at right; dog's head at base; cut cancel ---	OPEN	
211	Essay (proof?) of RN-D4 on white paper; no other inscriptions; paper creased, with thin spot; stamp with crease -----	OPEN	
212	Check, unused, 187--; RN-L4, with ornate monogram at left; 2 holes where signature would go -----	OPEN	
213	Small stock certificate of Oil land in Ohio, with RN-T1 (black); matching vignette at base; document repaired at right third; stamp untouched -----	OPEN	
214	Essay (proof?) of RN-D1 on white paper; no inscriptions; fine -	OPEN	
215	Check, unused, Altoona, Pa.; with RN-K4; ornate border and vignette of lady with harp; punch holes where signature would go; creases	OPEN	
216	Two checks, 1 with RN-A1, the other with A2; used, folded; also, cut squares of A1, A2 and A9 (damaged) -----	OPEN	
217	Two checks, one with RN-L5 (unused), the other with L10 (unused, but with punch holes in signature blank) -----	OPEN	
218	Two receipts and one cut square, with RN-B23; documents creased; all used -----	OPEN	
219	Group of checks: 2 with RN-B1 (1 used, 1 unused) both printed with large GOLD; B2, B3, B5 and B17 all used; B6 and 10 unused; B13 unused but canceled (handstamp); also cut squares of B5 and B7	OPEN	
220	Three checks, used: RN-C7 (cut cancel); C16 and 17 creased --	OPEN	
221	Check, unused, with RN-M2; violet vignette of building at left	OPEN	
222	Group of checks: RN-C21 (cut); RN-C22 (cut, 2 shades); E4 used; F2 unused (eagle over globe vignette); vert pair of G1 unused;		

- K6 unused; N3 (punched); X6 (unused) shades; and X7 unused. **OPEN**
- 223 Group of checks: RN-D1 (2 shades mint, 1 used); D3 unused (vignette of lady with sheaf); D4 unused; D4 specimen cut square; D9 unused (vignette of carriage) and cut square of same ----- **OPEN**
- 224 Irish money order, to Haiti Ham station, used 1959; interesting stamp printed on (fiscal?) ----- **OPEN**
- 225 French money order (?) form, date stamped 1891, but not filled in; carries early postage stamp vignette upper left with ornate frame; interesting engraving ----- **OPEN**
- 226 Similar item, used 1939, design plainer; carries vignette upper left similar to postage stamps but with globe replacing value; to New York City; faint design in center of Pegasus and lady ---- **OPEN**
- 227 Italy, collection of literally hundreds on hundreds of different items; shades, perf and wmk varieties; pairs, blocks, few multiples; many rarities included; great starter ----- **SB 150.00**
- 228 Virgin Islands, US Admin., 2c red and green; 7 blox of 4, including a line block, all mint; partial sheet of 20 mint, including crossed lines; partial sheet of 48 including crossed lines ----- **MB 5.00**
- 229 Porto Rico, larger size revs, 1c green (14 copies, with block of 6); 5c bistre (19 copies, with block of 6); all mint VF, some SE **MB 4.00**
- 230 Canada, 4c excise strips, 1942; mix of few dozen including 1/10, 1/11 and 2/21 lb. tobacco issues; good condition, some punched - **OPEN**
- 231 Canada, mix of several dozen postage stamps ovptd G; small regular issues and commems; mostly fine used ----- **OPEN**
- 232 Canada, mix of cigarette tax stamps; 20c, 25c values, mostly used with mfg. ovpts; condition mixed; about 23 items total ---- **OPEN**
- 233 New York stocks, mix of hundred+, all values; mostly perfin -- **OPEN**
- 234 USIR, mix of several dozen Stocks, mostly low values, and perfin **OPEN**
- 235 Cigar box, redwood, 7x3½x2"; has Springfield 50 cigar taxpaid #54B tied; has inner cover drawing dated 1871, and stamp is mss dated 1872; real curio ----- **MB 10.00**
- 236 Package of tobacco, never opened, has series 125, 1½ oz. 1926 tobacco taxpaid tied, as yet uncut; another curio ----- **OPEN**
- 227 Medicine Tax Stamps, Worldwide, by Griffenhagen; ATA handbook #76; sold for \$6; like new ----- **OPEN**
- 238 Four small medicine cardboard boxes; various medicines put out by RV Pierce (see USJR RS189, 190); label end of each box similar to USIR medicines in black, showing Pierce; further curiosa ---- **OPEN**
- 239 Even curioser: wooden board, part of Liquor box, with USIR taxpaid tied Coupon F for 1.9 proof gallons, used 1933 in Illinois, blue and black ----- **OPEN**
- 240 Hubbard's State taxstamp (Docs) catalogue, excerpts from larger one; personally inscribed in 1968; like new ----- **OPEN**
- 241 Washington State, US Dept. of Agriculture Egg Insignia, 13 diff cut squares; oddball ----- **OPEN**
- 242 New York State, two beautifully engraved Licenses, one liquor, 1940, one beer, 1935-56; embossed NY seal on each ----- **OPEN**
- 243 Full sheet of 100 Idaho Liquor seal, Hubbard LS6, CV 75c each; also full sheet of 100 Rhode Isl. seal, LS2, CV 1.00 each ----- **OPEN**
- 244 Property redemption document, Iowa, filled in in 1863, with R27 tied; amazing condition for 110 years; almost like new ----- **OPEN**
- 245 Two stock certificates, each beautifully engraved; one 1925 from Gould & Curry Mining Co. SF (2-10c USIR stocks tied rear); other 1931, Chollar Gold & Silver Mines (3-2c stocks tied rear) ----- **OPEN**
- 246 Handwritten receipt to Cheshire RR Co., used 194(5?); folded, but like new ----- **OPEN**

247	Group of 5 taxpaid: 3 Wholesale Liquor dealer, 20, 30 and 40 gal., series of 1910, complete with stubs; 2 Distillery Warehouse stamps, 1 of 1875 with Columbia, 1 with Taylor, 1878; both punched; with stubs -----	OPEN
248	Group of three roto foto cards, with first issue revs tied each, showing the pinup girls of the year (Yich) -----	OPEN
249	Group of 35 diff worldwide registration labels -----	OPEN
250	USIR Alcohol Warehousing strip, series 1960, thin spot; plus, Bonded bottle strip (Fleischman's) ½ pt. 1914-18 VF; plus, strip of 3-1/5 gal. red Bottle strip, few creases -----	OPEN
251	Bank check, used 1867; Empire Mining Co.; has first issue rev tied and covered partially by early Nevada State rev.; check folded, stamps good -----	OPEN
252	Five checks: RN-X6 and 7 plain, cut; X6 (cut) with tricolor engraving of eagle on rock; RN-D1 and G1 with locomotive vignettes (both cut) -----	OPEN
253	Eight bank checks, all with early USIR adhesives tied; all cut -	OPEN
254	Ransom's Family Receipt book, 1884; ancient almanac; also many receipts and interesting medicinal blurbs touting Ransom's medicines; fine condition -----	OPEN
255	No. Carolina, 7 diff. large Gas and Kerosene inspection stamps, 1917-18, seldom seen -----	OPEN
256	Missouri, 12 diff Gasoline stamps, 1909-20; list Hubbard; all VF	OPEN
257	Similar, 8 diff VF Coal Oil stamps, same period -----	OPEN
258	Missouri, 11 diff Apple stamps, early 40's, mint -----	OPEN
259	Nevada Docs, D5, 5a, 7, 8, 8a, 9a and 10, all VF used; also D28 VF mint -----	MB 6.00
260	USIR cigarette taxpaid, 36 diff earlies, all sound copies: TA9, 14, 17c, 17d, 18c, 21c; 24A//111a (17 diff); TA133b//274b (8 diff); and TB 18a, 18b, 21d, 22a and 80 -----	MB 7.00
261	USIR, RD364, \$10,000 green; cut cancel, crease; SE right & base CV	9.00
262	Similar, RD286; cut cancel, crease; SE top and right ----	CV 75.00
263	Similar, RD312; cut cancel, crease; SE right -----	CV 115.00
264	USIR, Narco, 9c purple 6-incher RJA65, imperf., VF -----	MB 6.00
265	Similar, 10c purple; RJA66; imperf, VF -----	MB 5.00
266	Similar, 19c purple; RJA69; imperf, VF -----	MB 5.00
267	Similar, 20c purple; RJA70; imperf; tear at right, repaired; looks VF -----	MB 15.00
268	Mess No. 2: includes 9 diff US tax exempt seals for armed forces, 4 diff PR Boutwells, strip of 15 1 oz. series 113 tobacco stamps, 3 diff USIR fermented Malt Liquor stamps, 16 diff. cig. co. replacements for the taxpaid, 15 diff. USIR wines, few others SB	4.00
269	USIR duck, RW1, used single; perfs close top -----	CV 12.00
270	Similar, RW25, mint plate # single, small stain in plate edge, hinged -----	CV 6.00+
271	USIR, R733, mint plate # block of 4; hinge mark one stamp -	CV 4.00
272	US PO poached eggs, coil pair, mint VF -----	SB 3.50
273	Same, SE right stamp (coil end?); mint VF -----	SB 3.00
274	Pennsylvania Stock, Hubbard TS9, vertical pair; used VF ----	CV 5.00
275	Similar, ST18a unlisted, unpriced; vertical pair, punched ----	OPEN
276	No. Dakota, cigs C13, 14, 16; also C11 centered left (RRR) MB	7.00
277	Louisiana docs, D1-5, used unpunched -----	MB 3.00
278	City of Bellingham, Wash., 1933-34 beverage license fee stamps, 9 diff mint; plus, Bend, Ore., 1934 beer stamps, blox of 6 of 60c and 12c values; plus, Calif. apples, B grade typeset 1917 and Eureka 1915 seal; plus Klamath Falls, Ore., 1934 beer stamps,	

	7 diff; plus Ore/Washington melon & tomato stamps, 3 mint diff MB	11.00
279	USIR, first issue imperfs, R1a//42a, 13 stamps; generally good, few cut close, some wide margins -----	CV 34.92
280	Same, R44a//64a; same condition; 14 stamps; R45a punched	CV 47.00
281	Same, R65a//78a; same condition; 9 stamps; R68a punched	CV 31.50
282	Same, R86a, pen cancel, good condition; stain top right ----	CV 13.50
283	Same, R89a, pen cancel, cut close top -----	CV 4.00
284	Same, R92a, pen cancel, cut close right -----	CV 50.00
285	Same, R95a, light pen cancel, cut close right -----	CV 40.00
286	Same, R98a, bright color, good condition; faint crease -----	CV 8.00
287	USIR, first issue partial perfs, R1b//42b; generally good; 24 stamps; R11b cut close horiz.; R16b & 18b cut close top; & sim	CV 145.05
288	Same, R43b//64b; 18 stamps; some cut close; generally good	CV 52.45
289	Same, R66b, pen cancel, top close, otherwise fine -----	CV 20.00
290	Same, R81b, pen cancel, also herringbone cut; close at base -	CV 72.50
291	USIR, first issue perfs, R1c//42c; 45 stamps, generally VF; some with perfs close, some with almost invisible cancels --	CV 34.18
292	Same, R2c, perfs cut left, no cancel showing; bright -----	CV 20.00
293	Same, R21c, nice center, but creased -----	CV 45.00
294	Same, R43c//65c; 28 stamps; generally good, some close perfs	CV 24.46
295	Same, R66c//80c; 12 stamps; generally good, close perfs --	CV 21.65
296	Same, R73c, close at top, perfs damaged -----	CV 18.50
297	Same, R74c, close at top, punch hole -----	CV 19.00
298	Same, R79c, perfs OK, scrape on face -----	CV 15.00
299	Same, R81c/92c complete; generally fine; pinhole in 90c; 2 each shades of 84c -----	CV 53.09
300	Same, R98c, perfs cut base, herringbone cut cancel -----	CV 5.00
301	Same, R100c, faint crease, few tiny pinholes -----	CV 19.00
302	Same, R101c, perfs close base, otherwise fine -----	CV 18.00
303	USIR, second issue, R108//127; 23 stamps; R124 punched; few other herringbone cuts, others good to VF; includes R126 ----	CV 69.75
304	USIR, third issue, R134/149 incl; generally F-VF; R142 creased	CV 53.80
305	USIR, Playing cards, RF1-4 inclusive, used, some creases ----	CV 15.35
306	USIR, props, RB1a thru 6a, RB1b thru 7b, less 5b; most off center with perfs close; few shades included -----	CV 46.95
307	Same, RB11a thru 17a less 15a, RB11b thru 18b incl.; battleship set RB20r thru 31r thrown in; condition fair for all, with some close perfs, creases -----	CV 45.55
308	USIR docs. R153-55, 155a, plus battleships R161r thru 172r; almost all mint -----	CV 8.85
309	Same, R173r//192r, 18 stamps, mostly cut cancels, with shades	CV 8.56
310	Same, R180, cut cancels horiz.; wide margins, pen cancel too -	CV 125.00
311	Same, R195//222, mint & used interspersed, 27 stamps, most fine	CV 14.89
312	USIR props, RB32//64, mostly mint, few used, generally F, 29 st	CV 58.27
313	USIR docs, R228 thru 263 inclusive, plus a few shades; mint and used, mostly fine; 246 thru 250 with SE -----	CV 51.33
314	USIR props, RB65-73 complete, mint and used interspersed; also Cig. tubes RH1 thru 4 (shades) -----	CV 10.45
315	USIR docs, R264/281 complete, mint and used, mostly fine --	CV 27.15
316	USIR dated docs, R288//305, omitting 302 and 303; 1940 issue, mostly fine used uncut -----	CV 67.29
317	Same, 1941 issues: R311//328, 15 stamps, some cut cancels --	CV 6.63
318	Same, 1942 issues: R336//355, 17 stamps, mostly used uncut -	CV 9.10
319	Same, 1943 issues: R361//380, 17 stamps, mostly used uncut	CV 9.32
320	Same, 1944 and 45 issues: R386//403, 411//428, mostly used, uncuta few cut items; 33 stamps -----	CV 12.08

321	Same, 1946 and 47 issues: RR436//458, 461//479, mostly fine used, few mint, few cut; 33 stamps -----	CV	26.70
322	Same, 1948 and 49 issues: RA86/504 complete, R511/529 complete; many mint, others fine used, few punched -----	CV	34.17
323	Same, 1950 and 51 issues: R536/553 complete, 561//58i; 37 stamps; many mint, others fine used; few cut cancels -----	CV	41.12
324	Same, 1952 issues: R586//614; most fine used, R614 cut; 17 stps	CV	25.23
325	Same, 1953 issues: R620//644, mostly fine used; 23 stamps -	CV	50.58
326	USIR undated docs, R654//678; mostly fine used, few mint -	CV	32.49
327	Same, R723 mint single and block of 4; also R734 mint single and plate # block of 4 -----	OPEN	
328	USIR Future Delivery, RC1//26, omitting RC2, mostly fine used, larger stamps with SE -----	CV	29.86
329	USIR Stocks, RD1//41; missing most larger stps, most F used	CV	10.99
330	Same, 1940 dateds, RD42//59, RD67//82; with RD76, 78; mostly fine used -----	CV	36.65
331	Same, 1941, 42, 43, 44 issues, mixed condition; RD92//179 --	CV	18.94
332	Same, 1945, 46, 47, 48, 49, 50, 51 issues, RD186//342; includes mint and used; some cuts and perfins -----	CV	24.23
333	Same, RD312, cut cancel, SE right -----	CV	115.00
(See also lot #263)			
334	US misc issues: Postal notes PN1-18, all used complete set; PS4 mint fine; PS11 mint electric eye pane of 10; WS1 fine; WS7, 8 and 9 mint singles, WS12 coil pair, and WS13 line pair	CV	16.40
335	USIR wines; RE1/30 complete, mint and used; some damage to RE23 and 29 -----	CV	49.06
336	Same, RE32//56, mint/used; mostly good condition -----	CV	31.29
337	Same, RE60//82, mint/used, mostly good; RE82 perfin ----	CV	17.46
338	Same, RE83A/105 complete; mint/used; RE104 cut, 105 perfin	CV	20.72
339	Same, RE108//203, mint/used; following are perfin: RE163, 164, 166, 180, 181, 198; mostly good condition -----	CV	223.98
340	USIR Playing Cards; group includes RF1, 2, 3 (3 shades), 4, 6a, 12c, 16, 17; 6a & 12c heavy crease ea, 4 with close perfs base	CV	105.70
341	Same, includes RF19/24, 26, 27 and 3 each 28; 21 with faults	CV	9.76
342	USIR, Misc. lot includes RG1, RG108, 109, 111, RI1 and 5, all mint plus RJ1 thru 6 good used (RJ3 mint) -----	CV	5.35
343	USIR Consulars, RK3//38; 21 stamps, mostly fine used; RK7 with small faults, RK20 with SE, RK38 likewise -----	CV	26.17
344	USIR Customs Fee stamps, NY; RL1//8, missing RL17; mostly fine used -----	CV	5.74
345	USIR, Motor Vehicles, RV1//53, mostly fine mint; RV3 and 5 have SE, RV7 poor unused; some used issues unpriced by Scott; 11 stps.	CV	53.00
346	USIR Boating stamps, fine mint, complete with stubs, RVB1 & 2	CV	10.00
347	US Telegraphs, mounted collection from 1T1 thru 16-T11, some missing; fine starter; cond mostly F mint or used, few damaged	CV	41.74
348	Local dispatch companies, collection of reference forgeries, CV several hundred \$ if real, plus few unlisted items -----	SB	10.00
349	Collection current US local posts, such as Rattlesnake Island, Fireside, Chautauque, etc.; many FDC's and many mint singles	SB	10.00
350	Checks, USIR 1st and 3rd issues tied; 3 checks -----	SB	2.00
351	USIR, misc items: 20 each R152 (cancellation study mounted); mounted study of overprint varieties R153/155; same for props RB1//14 cancellations; condition varied -----	SB	3.00
352	USIR battleship collection; includes full sets of docs and props as singles, mint & used blox of 4, other multiples, plate number singles, printed and rubber stamp cancels. Nice study mounted	SB	35.00

353	Documents: handwritten rent receipt New Orleans dated 1870. and 1 check New Jersey bank (vignette of Columbia), dated 1865; both with 2c first issue rev tied -----	SB	5.00
354	Same, Lease, mortgage, deeds (2), all dated 1900-01, with 25c and 50c battleship docs tied -----	SB	5.00
355	Cover, flag cancel, 2c battleship doc used as postage 1898; at left: ad for Birds magazine -----	OPEN	
356	Checks, 5, with battleships (4) & R155 (1) tied; used 1898-99	SB	3.00
357	US Newspaper stamps, group of singles, mint and used, pairs, etc., of R173//185; varied condition, generally good -----	CV	11.36
358	US newspaper, as PR9, impf pair, trial color proof on India paper	OPEN	
359	Same, as PR15, trial issue perf 11 single, mint no gum -----	OPEN	
360	Same, group of 25 diff newspapers as PR9-32, overprinted or inscribed Facsimile, values 1c to \$60 as the original set; colors diff -----	OPEN	
361	USIR, used blox 4, mostly F, of R195, 198, 200, 202, 205, 206, 207	CV	49.70
362	Cover, with R196 (or 207) used as postage stamp, tied by nice cancel, to postcard addressed to Pet Milk; dated 1931 -----	OPEN	
363	Documents, group from 190's, 30's and 40's using USIR docs tied; deeds, checks, receipts, etc.; 11 items -----	SB	5.00
364	USIR, pairs, blox, multiples of R217//241 and RC11 -----	CV	9.00+
365	USIR props, RB32 or RB44 series items, all with printed cancels; mounted study of 40 items -----	SB	3.00
366	USIR prop. RB44, mint arrow block of 4 (real? looks handdrawn)	OPEN	
367	Same, mint blox of 4 of RB44, 45, 50, 54 and 65 -----	CV	3.75
368	Same, RB65 and 66, study of distinct shades and printed cancels, 16 items, mint and used -----	SB	2.50
369	USIR doc, R237, fine mint double impression -----	CV	5.00
370	Same, group of mint and used blox and singles of the same type, study of with/without dots; docs, future del., stocks, cig. tubes	CV	7.12
371	USIR ducks, used plate # singles of RW19 and 23; fair and fine respectively -----	OPEN	
372	USIR Motor Vehicle RV53, fine mint block of 4 -----	OPEN	
373	USIR narcotics, RJA33 and 34 used, centering so so -----	OPEN	
374	USIR, mounted collection of the large special tax stamps for Retail Liquor Dealer; 15 items, usual punch cancel; some with full stubs and coupon, some with no stubs; all with penalty at base -----	OPEN	
375	Similar collection of 13 items for Mfr of Cigars, all with stubs; 14 have penalty clause at base; 1873/1885 complete -----	OPEN	
376	Similar group, mixed usage, all without stubs; some with penalties; usual punch cancel; 8 items -----	SB	4.00
377	Similar group, 8 items, with all stubs and penalties -----	OPEN	
378	Similar item, unpunched, Proprietor of Bowling Alley or Billiard Room, 1901, 4 stubs; creased but otherwise fine -----	OPEN	
379	Similar item, unpunched, 1901, 4 stubs, Proprietor or Agent of Public Exhibition for Money; same condition -----	OPEN	
Note: The following 8 lots are embossed colorless eagle-type revenues as illustrated and described on page 467-8 of Scott 1973 Specialty Catalogue. CV is listed; documents are all handwritten and in very fine condition for the age, barring creases. Bid accordingly.			
380	Connecticut dated 1799 on small receipt; RM46, 10c -----	CV	2.00
381	Same, 1801; RM45, 4c -----	CV	2.00
382	Maryland, 1799, same, RM100, 25c -----	CV	1.50
383	New Hampshire, 1799, same, RM123, 4c -----	CV	4.00
384	New York, 1799, same, RM150, 10c -----	CV	2.50
385	Massachusetts, 1800, same, RM110, 4c -----	CV	2.00
386	Same, 1799, RM111, 10c -----	CV	1.50

387	North Carolina, 1800, same, RM163, 10c -----	CV	4.00
Note: The following 4 lots are embossed colorless revenues type EP71 per Scott page 470, 1973. CV is listed, condition of documents unbelievable			
388	Maryland, check used 1849, RM370, 10c -----	CV	2.50
389	Maryland, handwritten receipt, 1848, RM370, 10c -----	CV	2.50
390	Maryland, same, RM373, 50c -----	CV	2.00
391	Maryland, check used 1848, RM375, \$1 -----	CV	2.00
392	Hydrometer stamps, as listed by Larsen, 1968; group contains H1, H12(2), H13(2), H18, H22, H25(2) and H29; condition fair to fine; Larsen's prices add to CV 72.50 -----	OPEN	
393	Lock seals, mounted group, contains: Prohibition (2 diff), Industrial Alcohol (1), US Int. Rev. (28 diff); condition fair to fine; all have perfin portion at base -----	OPEN	
394	USIR, Rectification Tax stamps, RZ1//13, missing 2 and 8; all have square punch cancels -----	CV	20.75
395	USIR, Distilled Spirits Excise Tax stamps, group: RX1, 8, 10, 14, 18, 28, 29, 32, 35, 38, 40, 41; all punched -----	CV	36.30
396	USIR narcotics, RJA9, pair and strip of 3, violet handstamp; 15½x2½ mm, sans serif -----	OPEN	
397	Similar group: RJA 33 mint, with dot; RJA36 used with dot, RJA34, 36 and 39 used without dots -----	OPEN	
398	Similar, Lilly ovpt, as RJA26, but dated 3-10-19 and ovpt Narcotics as RJA33-36 -----	OPEN	
399	More narcotics, group: RJA42b, 43a pair, 43d, 43a, 44a, 44b(2), 44b strip of 3; many shades; condition poor to fine -----	OPEN	
400	And again: group: RJA46a, 46b, 47b, 49b, 50b, 51b, 52b, 54b, 55b; condition varied; few fine -----	OPEN	
401	Still more: group: RJA62b, 67b, 71b, 74b, 73b; condition good (?) -----	OPEN	
402	And yet: vertical strip of 9 of RJA73b; creases, black ink streak across strip making X -----	OPEN	
403	And finally (for this group): fine used RJA76 -----	OPEN	
404	Supplementary to the above: Special tax stamps for Retail Dealer in Opium, etc; 6x4", used in Michigan: 1922 and 1923, \$6 face; few creases, otherwise fine -----	OPEN	
405	US Dept. of Agric. Potato Tax Exempt stamps: 1 pane of 12 of the 2lb. and 2 panes of the 50lb. -----	OPEN	
406	Misc. USIR taxpaid: 4 Mixed flour, 18 Oleo stamps; flours fair condition, oleos mostly perfin; CV Springer -----	CV	6.35
407	Misc. taxpaid; Devices, Alleys and Tables; Wagering Tax; Dept. of Agr. Meat inspection stamps; Food order; Cotton Duty of 1863; and Gum Resin Permit to Market; cond. mixed, poor to F SB		5.00
408	Customs Service, baggage inspection, Declaration stamps; group of 27 items, not listed, condition fair to fine -----	SB	10.00
409	Two documents bearing Consular service fee stamps; one 1928 letter to Immigration by Vice Consul in Trieste, and a certificate declaration, Antwerp, 1922 -----	OPEN	
410	Cotton Tagging certificate, dated 1935-36, for USIR Treasury Dept., together with a red metallic cotton bale tag -----	OPEN	
411	Collection of Cigar taxpaid, USIR, containing Small and Regular Cigar stamps and strips, in varied condition, plus many unpriced items; catalogued at more than 50.00 -----	SB	30.00
412	Cigar items, including Customs strips for imported cigars, acts of 1910 and 1931; for Cuban imports of 1950, 1953, 1945; and NRA labels for 5, 8, 10, 25, and 50 cigars, several classes --	SB	7.50
413	USIR, Playing cards, mounted study of shades, cancellations, surcharges, etc., mostly good or better; CV for basic stamps CV 47.00+		

- 414 Mounted collection of mostly 1st issue (perfs) on documents of the 1860's and early 70's; stamps mostly good to fine; few imperfs and 3rd issues; hand written receipts, foto cards, checks, etc.; CV of stamps alone is more than 28.00 ----- OPEN
- 415 USIR, collection of tobacco strips and stamps, from very early unlisted items to late series material; CV Springer better than 30.00; condition mixed; some Lincolns also ----- SB 20.00
- 416 USIR, collection of tobacco strips, series 102 thru 125, plus a few later facsimiles; condition good to fine; Springer CV ---- CV 23.00-+
- 417 USIR, Distilled Spirits Stock on Hand, dated 18--; unused but signed, unpunched, complete with coupon and stub; fine ----- OPEN
- 418 Similar, Wholesale Liquor Dealer, 1872, orange on grey silk, punch cancel, complete with stub ----- OPEN
- 419 Similar, Rectified Spirits, 1872, red on violet silk, and green on grey silk; both punch cancel, complete with stubs ----- OPEN
- 420 Similar, Rectified Spirits, 1875, Hamilton; values: 10, 30, 40 and 50 gals; type I (value split); punch cancel; complete with stubs and coupons ----- OPEN
- 421 Same, type II (value both sides); punch cancel; 10, 20 and 30 gals; complete with stubs and coupons ----- OPEN
- 422 Similar, Wholesale Liquor Dealer, 1876, green on green, used, 20 gals; and punch cancel; no coupons; fine otherwise ----- OPEN
- 423 Similar, Special Bonded Warehouse Stamp for Grape Brandy, 1877 green on green; punch cancel, complete with coupon and stub -- OPEN
- 424 Similar, Wholesale Liquor Dealers, 1878, green on green, 10 gals; punch cancel, complete with all stubs and coupon ----- OPEN
- 425 Similar, Tax Paid Receipt, 1878, used 1890; unpunched, but no coupons; creased, otherwise fine ----- OPEN
- 426 Similar, Rectified Spirits, 1878; 20 and 40 gals, used but unpunched; 6 coupons only each stamp; 40 gal ovptd in red ----- OPEN
- 427 Similar, Distilled Spirits for Exportation, 1878, dated 18--; black on blue, A and D; punch cancel; complete with coupon ----- OPEN
- 428 Similar to last 2, dated 19--; 2 copies, both A; unpunched, without coupons; used 1916 ----- OPEN
- 429 USIR, General Bonded Warehouse Stamp, 1894, Jackson, perfect mint, with coupon; blue paper ----- OPEN
- 430 Similar, Distilled Spirits Tax Paid, 40 gals., used, unpunched, with only 4 coupons remaining; pen cancel; 1894, Webster ---- OPEN
- 431 Similar, Distillery Warehouse Stamp, 1868, wbk IR; punch cancel but with full coupon; Springer CV 3.50; plus 2 used (no coupon) copies (unpunched) ----- OPEN
- 432 Similar group, Springer 1970 page 2; 3 values showing the building; 2 values showing the woman (Y and Z serials); 2 values Taylor, green and blue wmkd, 142x82; 2 values Taylor 84x75; and full folded pane of 4 of larger Taylor issue, green wmkd; all have punch cancel and full coupons and stubs; Springer CV 9.25 ---- OPEN
- 433 Similar group: Wholesale Liquor Dealer, 1910; 20, 30, 40 (blue) and 40 (light blue) gals; all unpunched, cpl with coupons, stubs; all F OPEN
- 434 Similar, Distilled Spirits, Webster, 1910 ovptd Act of 1938; 50 gals, blue paper; used, creased, 7 coupons remain ----- OPEN
- 435 USIR, group of Distilled Spirits case stamps, from Maryland, Pennsylvania and Kentucky, 1911, 1926 and 1933; 9 items with seated Mercury; condition poor to good ----- OPEN
- 436 US Customs, Stamp for Imported Distilled Spirits; 1933, with vignette of steamship upper left; used 1957 for Canadian Whiskey; condition almost fine ----- OPEN

437	USIR, Distilled Spirits for Exportation without payment of Tax; series 1955, red s/n; used 1957; fine -----	OPEN	
438	USIR, group of various Spirit Tax stamps, mostly poor condition, but rarely seen; 9 items from 1907 -----	SB	5.00
439	USIR, 1933 Fermented Fruit Juice, 12 oz value; study of cancels, etc.; 8 singles and mint block of 4; Springer CV 0.45 each -----	OPEN	
440	USIR, small Special Tax Stamp, Retail Liquor Dealer, 2 diff papers of \$25 face, used in Ill. and Calif., 1936 issue -----	OPEN	
441	Similar, \$2.20 face, Temporary Retail Dealer in Fermented Liquors, (Malt or Vinous); brown, used 1953 in Ill.; fine -----	OPEN	
442	USIR, Prescription Blank, National Prohibition Act, used 1928, 1922 form, about 5½x6½"; beautiful engraving; perfin at top -----	OPEN	
443	Similar, smaller (5x4½") Bureau of Industrial Alcohol, Prohibition Act, Dup. Prescription form; engraved; unused, with full coupon -----	OPEN	
444	USIR bottle strips, group: 4 vertical with plate # of 1 pint; 3 vertical of ½ pint; 13 singles with various cancels; all red eagle -----	OPEN	
445	Similar, green strips with various central designs for Bottled in Bond; 7 items from 1899 thru 1942; fair to good; plus 1960 Alcohol Warehousing strip, black engraved -----	OPEN	
446	Puerto Rico Wines, RE17//31; ½c to 80c stamps, 14 items, fair to fine; all used -----	CV	27.85
447	Puerto Rico Boatwells, RE33//48, all used, mostly perfin -----	CV	17.55
448	British Col. Customs Duty stamps, singles and multiples from Australia (London), Newfoundland, and Canada; plus few older Great Britain revs -----	SB	10.00
449	Union of South Africa, Douanes ovpts on postage stamps, bilingual pairs; mix of 121 pairs; duplication -----	SB	3.00
450	Illinois Beer stamps; group of 90+, mix of issues; mostly all perfin -----	SB	3.00
451	US Post Office Official Seals, few dozen mixed -----	SB	2.00
452	USIR, mix of few dozen RB154, 155 issues, shades, varieties -----	SB	3.50
453	Similar mix of RB65//73, few dozen; shades, varieties -----	SB	3.50
454	Similar mix of several hundred Scott type RB20 and 22 (pictures) with dots/no dots, plain or ovptd, mostly used singles, with several mint blocks included; dealer's lot -----	SB	10.00
455	Similar mix of Liberty heads, mostly used, plain, stocks, future delivery, etc.; few dozen -----	SB	3.50
456	Similar mix of battleships, docs and props, shades, mint/used, printed cancels, etc.; dealer or specialist -----	SB	3.50
457	Similar mix of mostly 1st issue smaller stamps, many shades, several dozen -----	SB	3.50
458	Similar small mix of state revs, mostly NY Stocks, cond. varied -----	SB	2.00
459	Similar small mix of Canadian small excise stamps -----	SB	2.00
460	USIR tobacco and cigarette strips and stamps, mix of few dozen, to the 16 oz. strips; condition varied -----	SB	5.00
461	Ration stamps, WWII type, mix of several dozen -----	SB	2.50
462	Another group of those fabulous pinups, foto cards with 1st issue revs tied, 9 items -----	SB	2.00
463	Gambler's lot; mostly junque; can be called Mess No. 3; few beers, docs, stocks, RB's, few RE's; some taxpays, etc. -----	SB	2.50
464	Telegraphs and Customs stamps, mix of several dozen; mint/used, much variety -----	SB	4.00
465	State Liquor seals, mix of several hundred from all the States; condition varies from extremely poor to fine -----	SB	5.00
466	More of those pinup and family foto cards with 1st issue revs tied; group of 36 diff fotos -----	SB	7.50

467	US Telegraphs, mix of 145 items, good to VF; mint/used ----	SB	3.50
468	USIR wine, RE196a, LLL error, CV 12.50; cut cancel -----	OPEN	
469	Same, perfin copy, center to right -----	OPEN	
470	State revs, mix of 200+, mostly NY Stocks -----	SB	2.50
471	USIR, 1st issue revs, mix of 120 items with handstamp cancels, 1c to \$2 values, F-VF -----	SB	15.00
472	USIR, 1st issue pairs, blocks, multiples, etc -----	SB	10.00
473	USIR, dealer or specialist mix of well over 1000 stamps, 1st issue; singles, multiples, pairs, etc.; CV 240.00+, R1//96, many shades and varieties, various perfs, etc. -----	MB	75.00
474	Mexico, mix of early revs, 350+ stamps, shades, cancels var., etc	SB	3.50
475	Philippine revs, mostly larger stamps, Warren CV 106.95; identified with Warren #; few Puerto Rico included -----	OPEN	
476	Worldwide lot of revs, forgeries, locals, telegraphs, unlisted, etc.; condition varied -----	SB	5.00
477	USIR medicines, RS9b//90d, with thins; CV 10.00+; 11 items -	OPEN	
478	Similar, RS98D//250D, better condition, good to VF, 18 diff CV	13.00+	
479	Similar lot, better yet, 15 diff RS114B//224D; CV 10.00+ --	MB	6.00
480	USIR medicines, RS169B, 3 each RS249B, and match R089B; repairs and fine appearing, small thins; CV 26.50 -----	OPEN	
481	USIR medicines: RS117D, 249, 148, 273, 156B&D, 132B, 256D, 258D; F appearing, small thins, some nicks, missing perfs; CV 25.10 -	OPEN	
482	Similar group, RS256D, 208B, 209D, 147A,D, 201B, 202B, 222, 126D; small thins, other small faults, F appearing; CV 13.75	OPEN	
483	Similar group, 44 diff, RS39D//274D; with faults, thins, etc; fair to fine; CV 21.00+ -----	OPEN	
484	Similar group, fine to VF condition; 17 diff. RS278//306; CV \$7	MB	4.00
485	Similar group, 7 diff. RS9B//208B, small thins, faults; CV \$7 --	OPEN	
486	USIR, promissory notes with various 1917 docs tied, F-VF notes, stamps fair to VF; duplication; 50 items -----	SB	6.00
487	Sissons 1969 Canadian rev catalogue, like new; sold for \$3 ----	OPEN	
488	USIR, mix of docs, stocks, postal notes; used, mixed condition; total of 570 stamps RD4//301, R228//290, PN1//18 -----	CV	28.00+
489	USIR, similar mix, RD92//127, 229; mixed cond.; 539 stps. CV	23.00+	
490	Handwritten summons, Indiana 1864, R54 tied -----	SB	3.00
491	Mortgage bond, nice engraving, New York 1898; R167 tied -	SB	3.00
492	Group of US State revs in blox and multiples, mostly mint panes; 167 stamps, few used; good mix from 9 states -----	SB	10.00
493	State revs, Pa and Mass, mix of 140 stocks -----	SB	3.00
494	State revs, Minn W28-31, 42-44, Mass ST26 (2), NY ST102b	SB	6.00
495	State revs, group of seldom seen items: RI punch proof realty, NC airport use tax, Ky trouts 1971 and 72 mint, etc. -----	SB	6.00
496	Germany, 34 diff Stuttgart Mobelmesse, mostly mint ----	SB	7.50
497	India, 7 values of the current Radio License Fee stamps, all fine used -----	MB	1.00
498	Denmark, collection 138 diff railroad stamps, nice -----	SB	25.00
499	Egypt, 12 misc revs + 2 cigs and 2 imperf blox of 4 cigs.---	SB	8.00
500	USIR special tax stamps, large, full coupons, stubs; usual punch cancel, 5 diff. -----	SB	6.00
501	Similar, 5 diff. -----	SB	6.00
502	Switzerland, starter collection: 61 federals, 556 cantonals, and 542 municipals -----	SB	100.00
503	Similar starter, 47 railway, 479 cantonals, 450 municipals -	SB	85.00
504	Similar starter, 50 federals, 866 cantonals, 238 municipals -	SB	100.00
505	Once more: 71 federals, 831 cantonals and 343 municipals--	SB	120.00
506	USIR, Silver, RG18, lt hand cancel, VF -----	CV	4.00

507	Similar, RG19, lt hand cancel, center some low, SE right --	CV	20.00
508	USIR, Motor Vehicles RV1 and 6, unused, SE on 6 -----	CV	10.50
509	Similar, RV18 and 30, both VF unused -----	CV	15.00
510	Similar, RV42, F unused, SE right -----	CV	8.00
511	USIR, Doc R733, mint plate block of 4, #168108, LR position, XF, full margins, etc. -----	MB	3.00
512	USIR, wine RE195, VF unused -----	CV	25.00
513	Similar, RE196a, LLL error, lt cancel, fine -----	CV	12.50
514	Similar, VF used block of 4 of RE30, lt cancels -----	est	5.00
515	USIR Boutwells, Puerto Rico, 7 values, most F-VF -----	CV	4.30
516	USIR, 5 first issues all with Wells Fargo cancels, scarce --	est	12.00
517	Nevada, 3 state revs, earlies, with Wells Fargo cancels in Virginia City -----	est	10.00
518	Calif. Bill of Lading strip of 4, blue paper, Hubbard D9, error I for T in fourth, papermaker Bath imprint -----	est	5.00
519	Similar, Insurance, 6 mos., D160 strip of 4 on white -----	est	5.00
520	Similar, Bill of Lading, 4 strips of 4; D1 and 3 on blue, D2 and 4 on white -----	est	7.50
521	Similar, 4 strips of 4, Insurance; blue paper, D156 and 166, and 7.50 and 37.50 unlisted on blue -----	est	10.00
522	Similar, 4 strips 4, Insurance; white paper, D149, 157, 162, 167	est	10.00
523	USIR, mint pair R667 (SE base) and 10 mint R734; CV 6.00	MB	3.00
524	USIR, mint strip of 3 (SE base) of R667; CV 6.00 -----	MB	3.00
525	Similar, mint block of 4 of R667 (SE top, small crease) ----	MB	4.00
526	Same, mint block of 6 (SE top), VF -----	MB	6.00
527	Mess No. 4: over 100 misc. items, docs, stocks, wine, playing cds., motor veh., cigarettes, cigar strips, etc; condition varied --	SB	5.00
528	NY State, 75 Stocks and 8 bedding stamps, mix in varied cond.	SB	4.00
529	Two curios, R152 used as postage on cover, 1899, and R164 sim- ilarly used, 1909 with flag cancel; covers clean -----	OPEN	
530	Cuba, 4 diff blox of 4 of Timbre Nacional ovpt on postage stamps, and 7 diff small Philippines documentaries -----	OPEN	
531	Delaware, 5 diff beer tax strips, nice condition, and beer bottle labels with Utah beer tax impression, also nice -----	OPEN	
532	Cigarette taxpays, USIR block of 14, 100 class A Clinton, each punched and each canceled with NY Customs House 1926 cachet.	OPEN	
533	USIR cigar taxpays, block of 4 of 25 cig. class E series 103, each with handstamp cancel by US Customs passenger baggage import	OPEN	
534	USIR cigarette taxpays, 100 class A Clinton, strip of 10 each ovptd Series 102 in red caps, used 1932 -----	OPEN	
535	USIR fermented Malt Liquor large revs, 5 diff 1/8, 1/6, 1/4, 1/2 and 1 BBL, each perfin; some stains; series 1934 -----	OPEN	
536	Tax paid certificate, Raleigh, N. C., \$15 for 6000 Gals. Illuminating Oil, nicely engraved, punch holes at signature; 9x4 inches ----	OPEN	
537	Snuff labels, replacements for the taxpays, 4 strips, 1 large label and block of 4 of smaller label, all diff -----	OPEN	
538	NY City, motor use tax stamps, each approx 2 1/2 x 4 inches, 4 diff dated 1953 thru 1957, one without stub; beauties -----	OPEN	
539	USIR lockseals, 25 diff. each with lock hole, and perfin/punched at base -----	OPEN	
540	Sight draft, used Dec. 1853, in Liverpool Eng., 2000 Sterling pounds; creases, small stain; condition surprising for the age -----	OPEN	
541	Similar, engraved with eagle vignette, etc., used 1853 in London, same condition -----	OPEN	
542	Curio: Statement by Acting Consul in Beira, Mozambique, as to accuracy of an invoice; 3 Belgian revs tied; date usage unknown	OPEN	

543	Checks, group used 1865 thru 1901, with USIR revs tied; one has postage used as rev; 8 items, few punched (not stamps); includes Wells Fargo item; some vignettes -----	OPEN
544	Checks, group includes: mint: RN-H3, B1, B13; used B17 uncut; and 8 diff checks, some with vignettes, with B1; most cut cancels -	OPEN
545	Similar group, includes: mint RN-E4 (one with vignette), J1, J5; used J4 and J5, cut cancels -----	OPEN
546	Parlor car usage of RN-X5, used cards, 2 diff shades of cards; plus 3 checks: RN-K6, 1 unused, 1 used with Columbia vignette (cut) and 1 RN-K8, unused punch punched check -----	OPEN
547	Checks, group includes 19 diff items with RN-G1; mint and used, shades, with an without vignettes, some cut cancels -----	OPEN
548	Similar group with RN-D1 in shades, 26 normal size checks, 2 tiny unused checks, 1 trial printing on white paper; mint and used, with and without vignettes, some cut cancels -----	OPEN
549	Similar group with RN-X7; shades, 13 items, mint and used, with and without vignettes, some cut cancels; plus 3 used (and cut) with RN-F1 in shades, 1 with vignette -----	OPEN
550	Similar group, includes: mint: RN-C2, 3 RN-C1 without vignettes and 2 with, RN-C7 unused but stained, with eagle vignette; and 5 used with C1, shades, most cut cancels -----	OPEN
551	Similar group, includes: 2 blue checks with RN-G1 with locomotive vignette, used and cut; same on white, unused, with Stamp Redeemed reading down (G1b), and another G1b (reading up) used and cut.	OPEN
552	Check, with RN-D3, split printing, half at top, half at base; used 1874, cut cancel; conversation piece -----	OPEN
553	Two checks: one green with RN-C9, used 1872; one with RN-C13, unused, with two punchholes LR -----	OPEN
554	Three portions of documents, each with RN-U6; 3 distinct shades; wide margins -----	OPEN
555	Similar group, cut squares, includes: RN-R3, R6, S2, V4, W2, W2 with ovpt, W2 in red shade, and W4 with ovpt -----	OPEN
556	Similar group, cut squares, includes: RN-B1, 3, 4, 6, 10 (2 shades), 10 with ornate frame, and 13 (torn corner); also E4 (3 shades), G1 (sample), H3, D1, D7, J4, J11, K1, 4 and 6, L3 and 5, M2, T3 (cut to shape) and 3 shades of T4 -----	OPEN
557	Turkey 19th cent. Ottoman Ad Valorem (Nisbi-Proportionnels) revs imperf in original colors; 35 pieces with high values; appraised in Istanbul at 900 German Marks+ -----	MB 100.00
558	USIR, R1b, large imperf margins, top shows large part of next stamp, neat mss cancel, F+ center -----	MB 2.00
559	USIR, R19a, 4 large margins, neat black mss cancel, VF --	MB 3.50
560	USIR, R33a, 4 large margins, neat mss canc, undercatalogd, VF	MB 10.50
561	USIR, R52a, fine margin top, others VF, bold on-the-nose cancel, F-VF; pretty -----	MB 5.50
562	USIR, R61a, 4 large margins, rich color; F-VF -----	MB 8.00
563	USIR, R69a, two items: 1 bottom sheet margin copy, 4 large margins; other 4 huge margins, XF; both black mss cancel ----	MB 3.50
564	USIR, group of 1st issue, 5 diff all with pre-printing paper folds	OPEN
565	USIR, 17 1st issue, 16 diff, all with handstp cancels, generally F	CV 4.10
566	Same, 1st issue multiples: R42a vert pair (VF, faded cleaned); R5a hor. pair (VF but crease, heavy mss cancel); R19b vert pair (F but creases) -----	CV 12.25
567	USIR, R184, left sheet margin single, \$1 D plate marking on selvage; neat cut cancel -----	OPEN
568	USIR, R281, vert pair from left sheet margin, full selvages, lower	

	stamp plate #55486; blue handstamp--Warner Bros. Pictu(res) V G-F centering -----	MB	7.50
569	USIR, 1883 100 Cigar strip stamps, half sheet; top pane of 5 with top selvage and pane guideline at bottom. Nice multiple ----	MB	14.50
570	Group of bankchecks with mostly RN-X6 and 7, mint and used, 33 items, plus 7 battleships on checks and 1 Canada postage used as revenue on check -----	CV	7.00+
571	Misc. USIR, includes 20 cigarette taxpaid (Springer CV 1.20), TA144 and 146; Auto RV1, 6 and 18 mix (6 items, M&U), and 2 ducks RW33 VF and 38 Ave. (both used) -----	CB	10.65
572	USIR playing cards, mix of 200 RF23 and 27, varied condition. CV		20.00
573	Assorted State revs, 10 singles including Ohio wines and beers, other States, plus two full sheets of 24 of Maine Beer Excise SB		5.00
574	USIR large special tax stamps, used, unpunched, 11 items of mostly VF Retail Liquor Dealer, most with full coupons, 1874-82 --	SB	12.00
575	Similar group, 7 items of Dealer in Mfgd Tobacco, same cond. SB		7.50
576	Similar group, mixed usage, 6 with full coupons, some punched, 9 diff items -----	SB	5.00
577	USIR, R733, full sheet of 50, pl. #168105 U.R., mint, crease horiz thru sheet -----	MB	5.75
578	Mix of foreign revs, about 340 stamps, small duplication --	MB	3.25
579	Foreign cut squares, used and unused, 800+ items; includes items of local posts -----	MB	4.00
580	USIR, large special tax stamps, punch cancel, full coupons, mostly VF, Mfg of Cigars, Retail Liquor Dealer, Dealer in Mfg Tobacco; 10 diff. -----	SB	10.00
581	Similar group, 9 diff. Retail Liquor, Mfgd Tobacco; same cond. SB		8.00
582	Similar group, 10 diff. Mfg Cigars, Retail Liquor, Mfg Tobacco SB		10.00
583	Similar group, 29 diff items, includes rarities, full coupons, punch cancel; many diff usages, mostly VF -----	SB	30.00
584	Group of 15 diff documents (bonds, stock shares, receipts, etc.); 9 items with federal (and some with state) revs tied; attractive SB		8.00
585	Similar group, 6 diff documents, same sort -----	SB	4.00
586	Canada, large diamond shaped Tobacco Customs stamps, CRS #G511; unused; small creases at right, otherwise VF -----	MB	1.50
587	USIR wines, series 1941, RE146, 7, 150, 1, 3, 6, 8, 160, 173; used group of mixed condition, includes 4 RE150; 72 stamps -----	CV	95.70
588	Similar group, RE112, 121, 3, 4, 9, 131, 3, 5, and 144; includes 25 RE124; 66 stamps -----	CV	55.90
589	Similar group, RE83A, 85, 7, 9, 91-93, 95, 6, 6A, 8, 9, 100, 101; includes 5 RE96A; 254 stamps -----	CV	39.61
590	Similar group, RE49, 50, 69, 70, 72-78, 82; includes 6 of RE82 and 10 of RE49; 95 stamps -----	CV	118.90
591	Similar group, RE102 (10), RE105 (17) and RE106 (1); mostly fine used, very few perfins; nice group -----	CV	72.95
592	USIR cig. tubes, RH3 and 4, 129 stamps, mostly fine used, many precancels -----	CV	23.56
593	Puerto Rico Boutwells, mix of 107 stamps, mixed condition, some fine used; includes RE33, 4, 5, 7, 8, 46 thru 49 -----	CV	50.69
594	USIR match stamps, RO26c, 33c, 49a, 83a and 84a; all sound, fine for these; CV 35.50 -----	MB	16.00
595	USIR medicines, 8 diff normal (faulty) condition to VF; CV 9.45 MB		4.50
596	USIR 1st issue silk paper, 8 diff. condition varied -----	CV	2.31
597	USIR R151a, invert, repaired corner LR, perfs cut design at left and top; CV 75.00 -----	MB	15.00
598	USIR dated docs R291//321 mint, used; few SE, some cut, punched;		

	70 diff; low to high values; CV 121.22	MB	30.00
599	Canada, 8 diff earlies including New Brunswick; used, few punch cancels; retail 11.00+	SB	5.00
600	Canada, 29 diff. used & mint; Bill stps, W&M, electricity, etc.	SB	20.00
601	Nova Scotia, 10 diff including 2 thin papers	SB	15.00
602	Canada, Saskatch. laws and power commission; 12 stamps, used, normal punch cancel	SB	21.00
603	USIR, playing card, RF28, mint block of 8, SE bottom; CV 44.00	MB	25.00
604	USIR wine, RE133, full mint sheet of 100, folded, VF; CV \$65	MB	15.00
605	USIR, Cigar inspection stamp, 390x25 mm., \$25 per thousand, orange; mounted on card, mint XF	MB	7.00
606	Similar, same size, \$40 per thou, rose; mounted on card, mint XF	MB	8.00
607	Private Match Collateral; US Postal Card UX9 addressed to the Diamond Match Co., Oshkosh, Wisc. former James L. Clarke factory); signed by Beecher, of Beecher & Sons, Westville, Ct., Secretary of the Diamond Match Co.; used 1895, VF condition	OPEN	
608	Same as lot 607.		
609	Puerto Rico, 4 diff. very large pieces of revenue stamped paper, VF; 1864-97; printed stamps as listed Forbin	SB	10.00
610	Similar, 10 diff. mostly VF, mostly of the 1880's	SB	20.00
611	Similar lot, 10 diff, mostly VF, of the 1880's	SB	20.00
612	Similar lot, 7 diff, mostly VF, plus large document 1891 franked with 5c revenue, imperf.	SB	15.00
613	Collection of unfranked bank checks, mint/used; many with colorful vignettes, in VF to Fine condition; from 1870's to 1930; 95 items	SB	25.00
614	Group of 4 unfranked Union Pacific RR, land office receipts, 1886 and 90, plus 11 diff unfranked documents, 1872-1920, some with fancy vignettes of engines, packet boats, etc., fine lot	SB	7.00
615	Collection of 44 inland packet waterway freight receipts dated between 1868 and 1923; many with vignettes; collateral group for ship cancel fancier or receipt collector; mostly F-VF, and extremely scarce in such condition	SB	75.00
616	Collection of documents (summonses, deeds, bank drafts, etc.) franked with first issue revenues in singles and pairs, many with vignettes, some handstamp clear cancels; 11 items in VF cond.	SB	30.00
617	Group of 29 19th century documents, each franked with stamp or RN, average to VF; many nice vignettes and handstamp cancels	SB	15.00
618	Collection of bank checks, 1864 thru 1901, each franked with stamp(s) or RN; good to fine cond.; many vignettes and fancy cancels; 96 scarce items	SB	70.00
619	Collection of documents, mostly franked with first issue stamps, (deeds, receipts, notes, drafts, policies, bonds, contracts, etc.); many vignettes, and in fine-VF condition; 23 scarce items	SB	60.00
620	Group of 1869-70 NYCRR vouchers, all franked with R15c, tied with XMAS DAY cancel 1869 (4 items), type N-11T cancel (3 items) and type N-12N cancel (2 items); all very fine	SB	30.00
621	Group of documents VF to superb, franked with stamps or uncut RNs; checks, receipts and stock cert.; 9 items	SB	12.00
622	USIR, 1st issue revs., 54 diff, average (some with faults) to fine; CV 28.64	MB	8.00
623	Similar, 52 1st issue revs, ea/w handstamp cancel, av. to fine	MB	7.00
624	USIR, horiz. pair R62a, 3 huge margins, VF; CV 25.00	MB	15.00
625	USIR, R35c and 68c, blox of 4 each, small flaws; fine, CV 27.50	MB	8.50
626	Similar, 16 diff scarcer 1st issue revs, small faults on some; CV 38.25	MB	12.00
627	USIR, mix of 94 1st issue, denoms to \$10, varied condition, some		

	faults; average lot -----	OPEN
628	Group of 21 diff R.R. cancels on 23 revs of 1st and 3rd issue; stamps and strikes from VG to XF -----	OPEN
629	Group of 10 diff 2nd and 3rd issue revs, few cc; ave to F+; CV 7.01 -----	MB 2.25
630	USIR, R154, P.C.C. & St. L. Ry. Co. printed purple cancel, VF and rare -----	MB 3.00
631	Group of 85 mint NH blox of R163p; CV 42.50 -----	MB 8.00
632	USIR battleship docs, handstamp and printed cancels, express Co. and RR types; 41 items, mostly F-VF -----	MB 6.50
633	Mix of 200 19th cent. revs, generally fine, all uncut -----	SB 6.50
634	Mix of 114 19th & 20th cent revs, all cut cancels, denoms to \$10	SB 5.00
635	USIR, 61 diff docs, 1898-1962, all but 2 uncut; CV 10.81 ----	MB 3.50
636	Mix of 162 uncut docs plus 5 diff uncut blox, F-VF -----	SB 10.00
637	USIR R257, center to left, fine condition; CV 12.00 -----	MB 4.50
638	USIR, 70 diff dated docs, VF uncut, to \$10; CV 25.16 -----	MB 8.50
639	Similar, 43 diff uncut dated docs, VF to \$5; CV 12.14 -----	MB 4.00
640	Similar, 38 diff, VF uncut; CV 9.50 -----	MB 3.25
641	USIR, 21 diff., R654//678, handstped and VF, to \$20; CV 25.39	MB 12.00
642	USIR, 25 diff 19th and 20th cent props, F-VF; CV 11.90 --	MB 4.00
643	Battleship props, 11 diff handstamps, 16 diff printed cancels; stamps and strikes from average to VF -----	OPEN
644	USIR props, 13 blox of 4 to 8, ave to fine; CV 5.00 -----	MB 2.00
645	Group of Scott-listed revs; 7 diff prop printed cancels; mix of 97 stocks & futre deliv., all uncut; 37 misc items (wines, consular, playing cards); 15 playing cards w/diff co. cancels; 5 diff Non-Scott cus- toms; VF; and 53 revs and cinderellas, listed and unlisted -	SB 10.00
646	USIR, Playing card RF18, ovpet. P.P.C.Co., VF; CV 10.00 -	MB 4.00
647	Mix of 147 revs and back of book items, mixed condition, faulty and fine; high CV -----	MB 10.00
648	Newspaper stamps, PR81 and 102, mint, fine+, plus 10 mostly diff officials, plus 3 sets postal notes, VF; CV 16.00+ -----	SB 6.00
649	Group of 475+ seals, labels, meters, exhibit. stamps; mostly mint, VF; duplication -----	SB 6.00
650	State revs, 48 diff Indiana Intang., 1933-63 VF; 12 diff Kansas Quails 1943-56 VF; 6 dif Mass. Stocks, VF; 13 dif uncut NY stocks	OPEN
651	State revs, 21 diff Indiana Intang., 1933-63 VF, plus 23 mint OG Indiana & Mich. in multiples, plus 47 diff uncut NY stocks ----	OPEN
652	Similar, mix of 79 cc and perfin NY Stocks, 25 diff Ohio revs, ave to Fine, 4 diff Wash. state conveyance, VF -----	OPEN
653	Three groups of State revs, 47 diff (12 states); 29 diff (7 states); and mix of 34 in mixed condition; plus 40 mint state liquor decal revs in strips and blox, VF -----	SB 15.00
654	Xmas Seals, mix of approx. 4000, in sheets, VF -----	OPEN
655	Group of 33 diff 1st issue, with imperf; plus mix of 55 1st and 3rd issue; plus mix of 54 19th cent. docs and props; plus 8 officials; condition mixed -----	MB 7.00
656	USIR, R62c, lt cancel, perfs touch at R; plus R262 mint OG VF	MB 2.75
657	USIR, group of 39 diff docs, plus 31 diff docs, plus 15 diff props, plus 27 diff stocks, plus 20 diff future deliv and stocks, plus 8 playing cards with precancels; few perfins -----	SB 8.50
658	Mix of 164 20th cent revs, taxpaid, postal notes, PO seals, and mix of 16 NY stocks -----	MB 5.00
659	1947 Exhib. labels, one set of 3 in red & black, another set of 3 in purple and black; mint VF -----	MB 5.00
660	USIR, R634 and 668 (SE), R637 (fine), 671 (ave.) -----	CV 13.10

661	USIR Duck, RW2, used ave, perfs cut RH side -----	MB	8.25
662	Similar, RW7 VF, unsigned, clean, w/o gum -----	MB	5.75
663	Similar, RW36, mint fine, NH plate # single -----	MB	3.75
664	Similar group: RW25 (2), 35, 37, 38 (2); most F-VF used --	MB	4.35
665	Foreign revs, 22 mostly diff from Mexico, Phil., China ----	SB	3.00
666	Virginia, 10 diff bear/deer damage stamps, VF used -----	MB	4.25
667	USIR R55c, extra row of perfs at base -----	MB	2.00
668	Calif., 10 diff fishing license, 5 diff validating stamps; Ariz. trout, special use F-VF used; also mint VF pane of 2 Colorado River special use -----	MB	5.00
669	Pa. Real Estate, 10 items to \$100 face, SD game bird and water- fowl; all good to fine used -----	MB	3.00
670	NY State Stock, ST116, \$1000 face; perfin, staple hole, ink cancel; good otherwise -----	MB	3.00
671	Collection USIR cigarette taxpaid, 154/10's and 11/20's; all diff cancels; TA17 and 18; CV 30.00+, good to fine -----	MB	10.00
672	US Medicine essay, 6c blue Hembold, huge margins, on card, VF	MB	6.00
673	USIR match revs, 9 diff, RO31b//172b, all XF -----	MB	4.75
674	USIR RS235d, XF -----	MB	11.00
675	Similar, RS265b, XF -----	MB	15.00
676	M&M's, 13 diff, mixed condition -----	CV	5.70
677	USIR playing cards, RU9b, 11a, 12a, 13d; all XF -----	MB	3.25
678	Medicine collateral, propaganda cover, Scott US 210 tied, used 1885: Clingman's Tobacco Cure Co., Durham, N. C. engraving; also match- ing letter on letterhd and pamphlet showing ad used at that time	SB	20.00
679	Private Prop. stamp album, Donald Mull reprint of original Carter album, VF and scarce -----	SB	20.00
680	Bankchecks, 30 items with R5c or 6c tied, all from Tioga RR Co., all used 1862-63; many listed & unlisted cancels in black or red	SB	10.00
681	Railroad cancels: R34c, 37c, 40c pair, 43b, 44c, 48a, 49c, 49c on piece, 55c pair; condition perfs touch to XF -----	SB	20.00
682	USIR, R90c, perfs close base, RR blue cancel on-nose -----	SB	10.00
683	USIR, R33a, VF, pen cancel -----	SB	10.00
684	Similar, R41a, huge margins, XF, pen cancel -----	SB	5.00
685	Group USIR: R44a (2), 45a, 46a, 47a, 48a; ample to wide margins, F to VF -----	SB	10.00
686	Similar group: R49a, 69a, 73a, 78a, 37b pair, 40b pair (repaired), 42b pair, ample to wide margins, G to VF -----	SB	22.00
687	USIR, R38c, block 4, center slight to right, perfs at R slight blunt, bright color -----	SB	11.00
688	Group USIR: R39c, 42c (2 pairs), 46d pair, 62c, 68c (2 strips of 3), 68c (block 4, repaired); off-center to fine -----	SB	9.00
689	USIR, R74c, center to LR, extra freak perfs vert & horiz; fine	SB	11.50
690	Group USIR: R78c (double transfer, 3 copies, 1 punched) and R89c pair, perfs cut base -----	SB	7.50
691	USIR, R97c, fine, freak perfs vert & horiz, blue HS cancel --	SB	14.00
692	USIR, R154: uncanceled margin single, part of imprint, plus mint block 4, margin arrow at left, guide lines & SE base (UL stamp tern) -----	SB	5.00
693	USIR, R179, XF, huge margins, pen cancel -----	SB	14.00
694	Mix of USIR 1st issue: R32c//85c; shades, cancels, multiples, double perfs, mixed condition; 576 stamps, CV 93.64 -----	SB	40.00
695	Mix of 1st issue handstamps and fancy cancels, F-VF, R33c//42c, 24 items -----	MB	15.00
696	USIR, R41a, huge margins 3 sides, ample at base; blue on-nose cancel, XF -----	MB	5.50

697	USIR, R44c, 98 singles and 1 pair, all with black HS on-nose cancels, many diff. -----	SB	10.00
698	Similar, 68 singles with blue HS cancels, many diff. -----	SB	7.50
699	USIR, R54c//65c, 27 items, diff black or blue HS cancels, many on-nose -----	SB	11.50
700	(already!) USIR, R53c, 59c, 63c singles, on-nose cancels ----	MB	6.50
701	USIR mix of 1st issue handstamp cancels, R66a//92c, 21 items, some pairs, mostly F-VF -----	SB	32.00
702	USIR, R483, used (uncut) vertical strip of 4 (unusual); CV \$32 as singles; perf at left, SE top, base and R of strip; from book; Tossed in: 2 (no-stamp) books for the \$30 and \$40 values, containing the receipts (unused) normally filled out -----	OPEN	
703	USIR, dated docs R284//678; 171 stamps with duplication, retailing at -----		23.65
704	USIR wine, RE169, center to left, nice cancel, italic CV -----		80.00
705	Similar, RE153, full sheet of 50, nicely canceled; folded in half; showpiece -----	OPEN	
706	USIR, goodies lot: RW11 unused, R222 used uncut, R248 used uncut, R505, used uncut SE, R531 used uncut SE, RV30 unused, creased SE; total -----	CV	51.95
707	More goodies: R644 (4 copies perf 4 sides, 3 with SE); R678 (4 copies perf 4 sides); R583 (3 SE copies); R689 (SE creased); R716 (SE creased); all used uncut; centering varied; total -----	CV	179.00
708	Mess No. (I forget): mix of USIR with docs, props, playing cards, consulars, battleships w/printed cancels, and few ovptd and small trip narcotics; condition varied -----	SB	7.50
709	Montenegro, Spajic #1-5, mint (scarce thus), gum crackled, otherwise VF -----	MB	30.00
710	Portugal, Commerce 1864, Forbin 6-10, used complete set --	MB	2.50
711	Liberia, Hilchey #21a, papermaker's wmk, slight gum stain, otherwise VF; scarce to rare, CV 50.00 -----	MB	25.00
712	Ireland, Petty Sessions 1862, Forb 3B & 4B (on paper); used VF	MB	3.00
713	Salvador, Alcohol 1904, Forbin #142-147, complete unused set except 2c used; VF -----	MB	3.50
714	Same, municipal 1902, Forbin #71, used, VF -----	MB	4.00
715	Same ovptd Timbre Especial para Santa Tecla on rear, used VF	MB	4.50
716	Similar, Forbin #81 (1903) and 110 (1907), both used VF -	MB	3.00
717	Same, #81 ovptd on rear as lot 715; perfs cut slightly, otherwise VF used -----	MB	2.50
718	Similar, 1916 municipals, perf complete set, unused, 10 stamps, VF-superb -----	MB	6.00
719	Similar, 1917, perf complete set, 11 stamps, unused, VF-superb	MB	6.50
720	Similar, 1916 issue, block of 9 mint, 5c value, with center stamp showing error 1915 -----	MB	2.50
721	Same, 10c value, block 9 with same error -----	MB	2.50
722	Same, 25c value, block 9 with same error -----	MB	2.50
723	Same, 50c value, block 9 with same error -----	MB	3.00
724	Same, 5 peso value, block 9 with same error -----	MB	4.50
725	Same, 25 peso value, block 9 with same error -----	MB	6.50
726	Same, 50 peso value, block 9 with same error -----	MB	9.50
727	Similar, 1918 municipals, perf, complete set of 11, unused; this is not the engraved issue; VF-superb -----	MB	6.50
728	Same, imperf, 9 values, 1c to 25 pesos, unused superb ----	MB	8.00
729	Ceylon, Foreign Bill, Forbin 47/57, 1st, 2nd, 3rd of exchange, complete except for #56 (2 and 3); used, 31 stamps, F-VF -	MB	2.50
730	Similar, 59/63, complete except for #59 and 60 (2nd), 13 stamps,		

	used mostly fine -----	MB	5.00
731	Similar, 64/67, complete except for 67 (11 and 2); used fine, 10 MB	4.00	
732	Similar, 68 and 69; 1st, 2nd & 3rd, complete used F-VF ----	MB	3.00
733	Similar, 70/74, few missing, 9 stamps, used good to fine --	MB	3.00
734	Literature: DeMagistris, AMG Europe revenues, 1954, VF -----	OPEN	
735	Jackson, part 1, Railway Letter Stamps of GB, 1968, VF -----	OPEN	
736	Kay, Impressed Duty stamps of GB & Ireland, 1924, fine -----	OPEN	
737	Dodd, South Africa revenue catalog, 1967, fine -----	OPEN	
738	Kaiser, Br. Playing Card Stamps, 1960 APS publ., binding split but fine inside -----	OPEN	
739	Collection of revenue stamped paper from India & states, many full documents, and many top halves and cut squares; most from very small and rare states, seldom seen; 153 piece—major collection MB	75.00	
740	Collection of adhesive revenues from India & states; again many small and rare states; some apparently unique; total 654 stamps; many earlies, unlisted anywhere; also contains some common items; but exception rather than rule -----	MB	100.00
741	USIR mix of many varieties: Customs, beers, fermented malt, mixed flour, snuff, tobacco, narco strips, cigarette taxpaid, oleo, postal notes, etc.; condition varied, most material good, some poor --	SB	15.00
742	USIR tobacco & cigar strips, rarities and common, 21 strips in mostly good condition; few mended -----	SB	12.00
743	State revenues, mix of 543 stamps; contains some rarities, such as Indiana Intang. imperf proofs, etc.; includes 100 mixed NY stocks unpunched, 200+ Ohio tax halves mixed, etc. -----	SB	50.00
744	Peru, Forbin Documents #4 (on cd) & #25, impf proofs/essays	OPEN	
745	Argentina, Buenos Aires Commerce, ship design of 1877, Forbin #36-70 types: 14 imperf proofs/essays, 12 diff., to the 2000 P; VF	OPEN	
746	Siam, Agriculture, type of Forbin 1883 #1-42: 5 trial color essays, imperf, of the left hand portion of the design; VF -----	OPEN	
747	Australia, 10 gal beer duty excise stamp, 6x3½ inches; 20 Sh stamp handstamped 30 Sh in violet, circa 1842; creased vert, tear UL corn	OPEN	
748	Argentina, 113 vars, plus 15 Rosario City, small to long strip types included; fine collection -----	SB	12.00
749	Brazil, 49 diff revs, plus 50 diff state & city revs; also the savings stamps on 20 diff cards, many with high values, some cards with several diff; cards also have some postage tied -----	SB	25.00
750	Cuba, 113 diff, includes tobacco strips -----	SB	5.00
751	France, 99 diff. mostly earlies, nice -----	SB	5.00
752	Peru, 22 diff, into the 1930's; good shape -----	SB	3.50
753	Portugal and cols., 112 diff, into the 1950's, nice -----	SB	7.50
754	Romania, 40 diff, into the 1940's -----	SB	3.50
755	Malta, 100 varieties, mostly postage used as revenues -----	SB	5.00
756	Worldwide revs and telegraphs, 135 diff, good group -----	SB	12.00
757	Foreign revenues, 520 diff.; GB & Cols., Austria, Latin America, China, etc. -----	MB	15.00
758	Same as lot 757		
759	China, People's Republic, mix of 125 revs, varied condition--	MB	3.00
760	GB & Cols, 285 diff revenues -----	MB	10.00
761	Latin American revenues, 260 diff. -----	MB	10.00
762	Sp. cols, 11 diff 1856 Derecho Judicial, + 20 diff Portugal & Cols	MB	2.50
763	China, 54 diff revs, including People's Republic -----	MB	2.50
764	India revenues, 72 diff, plus 10 large Court Fees, mostly F-VF	MB	4.50
765	Russia, 38 diff revs, mostly 19th cent, F-VF -----	MB	2.50
766	Mississippi, 1934 Wine/Beer, Hubbard BW7a, fine -----	CV	5.00
767	Kentucky, Beer tax, Hub. B11 and 12, and imported Liquor Tax,		

	IL1a, fine-VF -----	MB	2.00
768	USIR tobacco strip, 1 ea series 117 and 118, 1 7/8 oz., with (un-listed Springer) overprint: American Goods Returned -----	OPEN	
769	Same as lot 768.		
770	Same as lot 765.		
771	State revs, 244 stamps, some duplication; some VF, few perfins, mostly nice appearing and clean; many not listed Hubbard --	SB	15.00

Note: The following lots, 772 thru 806, are revenues of India and States, and are offered at the MINIMUM BIDS shown. Most rare material, and are priced accordingly.

772	Alwar, 42 court fees, 10 revs; total 52 -----	MB	15.00
773	Baroda, 7 court fees and 15 revs to 2R -----	MB	5.50
774	Barwani, 46 court fees, 4 revs to 1R -----	MB	20.00
775	Bharatpur (8 court fees, 2 revs) and Marwar (2 and 2) --	MB	6.00
776	Bhavnagar, 8 court fees to 1R -----	MB	2.50
777	Bilkha, Kutch, Gondal and Limbdi, total 16 diff. -----	MB	7.50
778	Cochin, TC, 15 court fees, 6 revs. -----	MB	6.00
779	Dewas, 6 court fees, 31 other revs. -----	MB	12.50
780	Dhar, 11 court fees and 4 revs. -----	MB	6.00
781	Dholpur, Banswara, Shahpura, Karauli, Mewar, Partagarh, 11 dif	MB	5.00
782	Dungurpur, 16 court fees, 2 revs -----	MB	5.00
783	Gwalior, 23 court fees to 8R, 12 revs. -----	MB	8.00
784	Hyderabad, 30 court fees and 5 revs. -----	MB	7.50
785	Idar, Kolhapur, Morvi, Singli, Sirohi, Sikkim; 9 diff. -----	MB	2.50
786	Indore, 21 court fees and motor vehicles to 100R, plus 4 revs.	MB	12.50
787	Jhalawar, 17 court fees and 9 revs. -----	MB	5.50
788	Same, 7 early purple handstamped values to 4R, 82 mm die	MB	5.00
789	Jaipur, 24 court fees and 16 revs, including 6 Gibbons listed postage with overprints -----	MB	6.00
790	Janjira, 4 revs., and Junagadh 8 court fees -----	MB	5.00
791	Jaora, 9 court fees and 4 revs -----	MB	6.00
792	Jind, 4 court fees & 3 revs; Nabha 4 court fees; plus 7 Patiala	MB	5.00
793	Jodhpur, 23 court fees and 4 revs. -----	MB	5.00
794	Khetri, 7 court fees, and Sikar, 3 court fees -----	MB	4.00
795	Khetri, Sikar and Kotputli, 14 diff ovpts on Jaipur Court fees	MB	5.00
796	Kotah, 61 court fees, 15 revs to 10R -----	MB	17.00
797	Manavdar, Mewar Uliapur, Muli, Rajkot, Wadhwan, Kutch, 21 dif	MB	10.
798	Marhya Bharat, 28 court fees and revs to 10R -----	MB	8.50
799	Patiala, telephone stamps, ovptd on QV to GVI; 16 diff --	MB	5.00
800	(Whcw) Ratlam, 8 court fees to 20R -----	MB	6.00
801	Porbander, 13 court fees to 10R, handstamped with Saurashtra Sarkar seal -----	MB	5.00
802	Saurashtra, or US of, ovptd on Junagadh, Limbi, Lathi, Bhavnagar and India court fees and revs, 15 diff. -----	MB	7.50
803	Travancore, T-C, and Kerala, 114 court fees and revs. -----	MB	15.00
804	Tonk, 36 cld court fees -----	MB	11.00
805	India and states court fees and revs, 100 diff -----	MB	6.00
806	Same, 200 diff. -----	MB	15.00

Note: End of Indian lots.

There it is, gang. Go get it. Best of luck.

SEND YOUR BIDS IN BY THANKSGIVING DAY — NOV. 22nd



"UNITED STATES REVENUE STAMPS

**Collect them for
Profit and Pleasure"**

NEW PUBLICATION

**A MUST for all dealers
and collectors**

MUCH INTERESTING MATERIAL

20 pages of illustrations

Price \$2.95

WILDEY C. RICKERSON
RFD 1 — Box 110
DEEP RIVER, CT. 06417

258



THE BEST MARKET

**for United States Revenues
is the H. R. Harmer Auctions**

COLLECTING? Request the deluxe, liberally illustrated, accurately described auction catalogues. They are free at the Galleries or can be obtained by mail (request application form).

SELLING? Ask for the booklet "Modern Methods of Philatelic Selling" explaining the many advantages of utilising Harmers.

270

H. R. Harmer, Inc.

The International Stamp Auctioneers
6 West 48th Street
New York, N. Y. 10036
(212) 757-4460

REVENUE MART

Buy, sell and exchange. 5c per word, minimum 20 words. Name and address will count for 5 words. Send all copy and remittance to Advertising Manager, 1668 Sycamore St., Des Plaines, Ill. 60018

WANTED: Specimens, proofs, trial colors, essays of 1st U.S. Issue. J. L. Diamond, 407 Lincoln Rd, Miami Beach, FL 33139

258

OHIO "Columbian" Sales Tax Showpieces: Full strips of ten proofs on plain orange paper: 1c, 2c, and 3c (C29, 30, 31). Regular price is \$10 per strip. Special: Only \$5 per strip, or all 3 for \$10 while they last. Also available at same prices: 1c white paper, grey safety paper, and 2nd bi-color on latter paper (C18, 26, and 28A). Satisfaction guaranteed or cheerful refund in 10 days. Approvals of other "Ohios." Hubbard's Philanumics, 17 W. San Fernando, San Jose, CA 95113.

258

LIBERIAN revenues bought and sold. Ethiopian revenues also wanted. Black-stamps B515 351 Broad St., Newark, NJ 07104.

265

WANTED to buy State revenues esp. trout, hunting and fishing stamps. D. Gibbs, 223 N. 20th, La Crosse, WI 54601

260

PAYING 10 percent Scott for any U.S. revenue, 1/2c min. per stamp, more for better items. Ronald Leisher, 1006 Plum St., Aurora, IL 60506.

261

APPROVAL prices frozen! Although our money gets cheaper and stamps get scarcer, we are freezing our prices until our stock is halved. Free stamps to new or renewal applicants. Hubbard's, Box 534, Santa Clara, CA 95050

260

WANTED to Buy: Chinese Revenues, Chinese Postal Savings stamps, Chinese Money Order stamps. Dr. R. E. Fuerst, Box EK University of Guam, Agaña, Guam 96910.

262